

Anti-OTUB2 Polyclonal Antibody

Summary

Catalog No.	PHJ38301
Host species	Rabbit
Tested applications	ELISA: 1:4000-1:8000, IHC: 1:50-1:100, WB: 1:1000-1:4000
Species reactivity	Human, Mouse
Immunogen	E. coli - derived recombinant Human OTUB2 (Met1-His234).
Form	Liquid
Storage buffer	0.01M PBS, pH 7.4, 50% Glycerol, 0.05% Proclin 300.
Clonality	Polyclonal
Isotype	IgG
Applications	ELISA, IHC, WB
Target	OTUB2,Ubiquitin thioesterase OTUB2,Otubain-2,OTU domain-containing ubiquitin aldehyde-binding protein 2,C14orf137,Ubiquitin-specific-processing protease OTUB2,Deubiquitinating enzyme OTUB2,OTU2,OTB2
Purification	Purified by antigen affinity column.
Accession	Q96DC9
Stability and Storage	Use a manual defrost freezer and avoid repeated freeze thaw cycles. Store at 2 to 8°C for frequent use. Store at -20 to -80°C for twelve months from the date of receipt.
Note	For research use only.

Data Image



Western blot

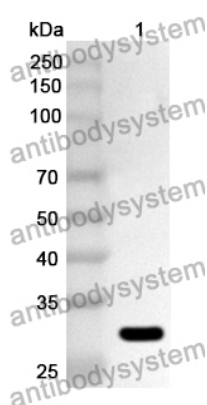
Various lysates were subjected to SDS PAGE followed by western blot with OTUB2 antibody (PHJ38301) at 0.38µg/ml.

Lane 1: SH-SY5Y cell lysate

Second Ab: Goat Anti-Rabbit IgG H&L Polyclonal antibody, HRP (PTB96431) at 0.1 µg/mL.

Predict MW: 27 kDa

Observed MW: 27 kDa



Western Blot

Recombinant Protein lysates were subjected to SDS PAGE followed by western blot with OTUB2 antibody (PHJ38301) at 1 µg/ml.

Lane 1: Recombinant Protein

Second Ab: Goat Anti-Rabbit IgG H&L Polyclonal antibody, HRP (PTB96431) at 0.1 µg/mL.

Predict MW: 30 kDa

Observed MW: 30 kDa