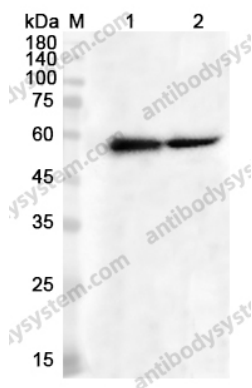


Anti-KAT5 Polyclonal Antibody

Summary

Catalog No.	PHJ35401
Host species	Rabbit
Tested applications	ELISA: 1:4000-1:8000, IHC: 1:50-1:100, WB: 1:1000-1:4000
Species reactivity	Human, Mouse, Rat
Immunogen	E. coli - derived recombinant Human KAT5 (Ala101-Ser457).
Form	Liquid
Storage buffer	0.01M PBS, pH 7.4, 50% Glycerol, 0.05% Proclin 300.
Clonality	Polyclonal
Isotype	IgG
Applications	ELISA, IHC, WB
Target	Tip60,cPLA(2)-interacting protein,Histone acetyltransferase KAT5,60 kDa Tat-interactive protein,KAT5,Lysine acetyltransferase 5,HTATIP,TIP60,HIV-1 Tat interactive protein,Histone acetyltransferase HTATIP
Purification	Purified by antigen affinity column.
Accession	Q92993
Stability and Storage	Use a manual defrost freezer and avoid repeated freeze thaw cycles. Store at 2 to 8°C for frequent use. Store at -20 to -80°C for twelve months from the date of receipt.
Note	For research use only.

Data Image



Western blot

Various lysates were subjected to SDS PAGE followed by western blot with KAT5 antibody (PHJ35401) at 0.29 µg/ml.

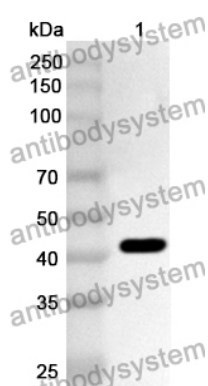
Lane 1: THP-1 cell lysate

Lane 2: HepG2 cell lysate

Second Ab: Goat Anti-Rabbit IgG H&L Polyclonal antibody, HRP (PTB96431) at 0.1 µg/mL.

Predict MW: 58 kDa

Observed MW: 58 kDa



Western Blot

Recombinant Protein lysates were subjected to SDS PAGE followed by western blot with KAT5 antibody (PHJ35401) at 1 µg/ml.

Lane 1: Recombinant Protein

Second Ab: Goat Anti-Rabbit IgG H&L Polyclonal antibody, HRP (PTB96431) at 0.1 µg/mL.

Predict MW: 43 kDa

Observed MW: 43 kDa