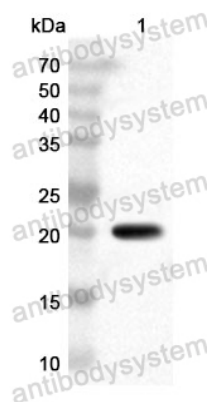


Anti-Human KAT2B Polyclonal Antibody

Summary

Catalog No.	PHN42701
Host species	Rabbit
Tested applications	ELISA: 1:4000-1:8000, IHC: 1:50-1:100, WB: 1:1000-1:4000
Species reactivity	Human
Immunogen	E. coli - derived recombinant Human KAT2B (Leu352-Lys832).
Form	Liquid
Storage buffer	0.01M PBS, pH 7.4, 50% Glycerol, 0.05% Proclin 300.
Clonality	Polyclonal
Isotype	IgG
Applications	ELISA, IHC, WB
Target	P300/CBP-associated factor, P/CAF, Histone acetylase PCAF, Lysine acetyltransferase 2B, Spermidine acetyltransferase KAT2B, PCAF, Histone acetyltransferase KAT2B, KAT2B, Histone acetyltransferase PCAF
Purification	Purified by antigen affinity column.
Accession	Q92831
Stability and Storage	Use a manual defrost freezer and avoid repeated freeze thaw cycles. Store at 2 to 8°C for frequent use. Store at -20 to -80°C for twelve months from the date of receipt.
Note	For research use only.

Data Image



Western Blot

Recombinant Protein lysates were subjected to SDS PAGE followed by western blot with KAT2B antibody (PHN42701) at 1 μ g/ml.

Lane 1: Recombinant Protein

Second Ab: Goat Anti-Rabbit IgG H&L Polyclonal antibody, HRP (PTB96431) at 0.1 μ g/mL.

Predict MW: 21 kDa

Observed MW: 21 kDa