

# Recombinant Human CD42b/GP1BA Protein, C-His

## Summary

---

<b>Catalog No.</b>	EHC25703
<b>Alternative Names</b>	CD42b, GP-Ib alpha, Antigen CD42b-alpha, GPIb-alpha, GPIbA, Glycoprotein Ibalpha, Platelet glycoprotein Ib alpha chain, GP1BA
<b>Form</b>	Lyophilized
<b>Storage buffer</b>	Lyophilized from a solution in PBS pH 7.4, 1mM EDTA, 4% Trehalose, 1% Mannitol.
<b>Purity</b>	>90% as determined by SDS-PAGE.
<b>Applications</b>	ELISA, Immunogen, SDS-PAGE, WB, Bioactivity testing in progress
<b>Endotoxin level</b>	Please contact with the lab for this information.
<b>Expression system</b>	Mammalian Cells
<b>Accession</b>	P07359
<b>Protein length</b>	Met1-Thr282
<b>Nature</b>	Recombinant
<b>Predicted molecular weight</b>	32.26 kDa
<b>Stability and Storage</b>	Use a manual defrost freezer and avoid repeated freeze thaw cycles. Store at 2 to 8°C for frequent use. Store at -20 to -80°C for twelve months from the date of receipt.
<b>Reconstitution</b>	Reconstitute in sterile water for a stock solution. A copy of datasheet will be provided with the products, please refer to it for details.
<b>Species</b>	Homo sapiens (Human)

**Shipping**

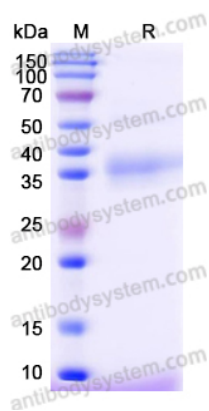
In general, proteins are provided as lyophilized powder/frozen liquid. They are shipped out with dry ice/blue ice unless customers require otherwise.

**Note**

For research use only.

## Data Image

---



SDS-PAGE

SDS PAGE for Recombinant Human CD42b/GP1BA protein