

# Anti-Human GAPDH Monoclonal Antibody (1A200)

## Summary

---

<b>Catalog No.</b>	MHC09003
<b>Clone ID</b>	1A200
<b>Host species</b>	Mouse
<b>Tested applications</b>	ELISA: 1:2000-1:4000, WB: 1:1000-1:4000
<b>Species reactivity</b>	Human, Mouse, Rat
<b>Immunogen</b>	E. coli - derived recombinant Human GAPDH protein (Met1-Glu335).
<b>Form</b>	Liquid
<b>Storage buffer</b>	0.01M PBS, pH 7.4, 50% Glycerol, 0.05% Proclin 300.
<b>Concentration</b>	1 mg/ml
<b>Purity</b>	>95% as determined by SDS-PAGE.
<b>Clonality</b>	Monoclonal
<b>Isotype</b>	IgG2b
<b>Applications</b>	ELISA, WB
<b>Target</b>	GAPD, Peptidyl-cysteine S-nitrosylase GAPDH, GAPDH, Glyceraldehyde-3-phosphate dehydrogenase
<b>Purification</b>	Protein A/G purified from cell culture supernatant.
<b>Endotoxin level</b>	Please contact with the lab for this information.
<b>Accession</b>	P04406

**Stability and Storage**

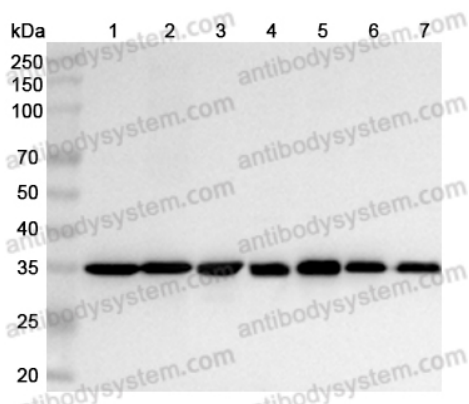
Use a manual defrost freezer and avoid repeated freeze-thaw cycles.

Store at 4°C short term (1-2 weeks). Store at -20°C 12 months. Store at -80°C long term.

**Note**

For research use only.

## Data Image



WESTERN BLOT

Various lysates were subjected to SDS PAGE followed by western blot with Human GAPDH antibody (4D12) (MHC09003) at 0.2 µg/ml.

Lane 1: MCF7 cell lysate

Lane 2: 293T cell lysate

Lane 3: HepG2 cell lysate

Lane 4: NIH/3T3 cell lysate

Lane 5: PC12 cell lysate

Lane 6: mouse kidney lysate

Lane 7: rat kidney lysate

Second Ab: Goat Anti-Mouse IgG H&L Polyclonal antibody, HRP (PMB96431) at 0.1 µg/mL.

Predict MW: 36 kDa

Observed MW: 36 kDa