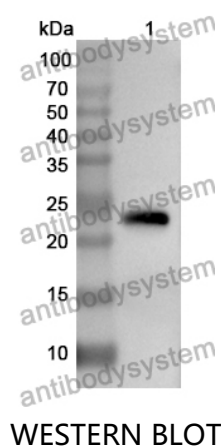


Anti-RNASE11 Polyclonal Antibody

Summary

Catalog No.	PHJ27001
Host species	Rabbit
Tested applications	ELISA: 1:4000-1:8000, IHC: 1:50-1:100, WB: 1:1000-1:4000
Species reactivity	Human
Immunogen	E. coli - derived recombinant Human RNASE11 (Ala18-Leu199).
Form	Liquid
Storage buffer	0.01M PBS, pH 7.4, 50% Glycerol, 0.05% Proclin 300.
Clonality	Polyclonal
Isotype	IgG
Applications	ELISA, IHC, WB
Target	RNase 11, Probable ribonuclease 11, RNASE11, C14orf6
Purification	Purified by antigen affinity column.
Accession	Q8TAA1
Stability and Storage	Use a manual defrost freezer and avoid repeated freeze thaw cycles. Store at 2 to 8°C for frequent use. Store at -20 to -80°C for twelve months from the date of receipt.
Note	For research use only.

Data Image



Recombinant Protein lysates were subjected to SDS PAGE followed by western blot with RNASE11 antibody (PHJ27001) at 1 µg/ml.

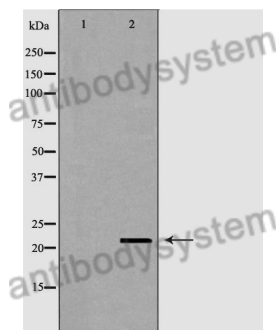
Lane 1: Recombinant protein

Second Ab: Goat Anti-Rabbit IgG H&L Polyclonal antibody, HRP (PTB96431) at 0.1 µg/mL.

Predict MW: 23 kDa

Observed MW: 23 kDa

Various lysates were subjected to SDS PAGE followed by western blot with RNASE11 antibody (PHJ27001) at 1 µg/ml.



Western Blot

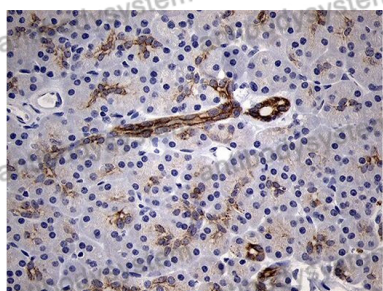
Lane 1: MCF7 treated with the antigen-specific peptide

Lane 2: MCF7

Second Ab: Goat Anti-Rabbit IgG H&L Polyclonal antibody, HRP (PTB96431) at 0.1 µg/mL.

Predict MW: 22 kDa

Observed MW: 22 kDa



Immunohistochemical

Immunohistochemical analysis of human pancreas stained for RNASE11 with PHJ27001.