

# Research Grade Anti-Human CD38/ADPRC 1 & CD3E Bispecific Antibody (AMG-424)

## Summary

---

<b>Catalog No.</b>	DHD80821
<b>Alternative Names</b>	Bispecific
<b>Clone ID</b>	AMG-424
<b>Host species</b>	Human
<b>Species reactivity</b>	Human
<b>Form</b>	Liquid
<b>Storage buffer</b>	PBS pH 6.0, 0.2M Arg
<b>Concentration</b>	3.85 mg/ml
<b>Purity</b>	>95% as determined by SDS-PAGE.
<b>Clonality</b>	Monoclonal
<b>Isotype</b>	half-IG G1 - kappa / (scFv - heavy - lambda) -h-CH2-CH3
<b>Applications</b>	Research Grade Biosimilar
<b>Target</b>	Cyclic ADP-ribose hydrolase 1, ADP-ribosyl cyclase/cyclic ADP-ribose hydrolase 1, cADPr hydrolase 1, 2'-phospho-ADP-ribosyl cyclase/2'-phospho-cyclic-ADP-ribose transferase, T10, 2'-phospho-cyclic-ADP-ribose transferase, CD38, ADPRC 1, ADP-ribosyl cyclase 1, 2'-phospho-ADP-ribosyl cyclase, T3E, T-cell surface antigen T3/Leu-4 epsilon chain, CD3e, CD3E, T-cell surface glycoprotein CD3 epsilon chain
<b>Purification</b>	Protein A/G purified from cell culture supernatant.

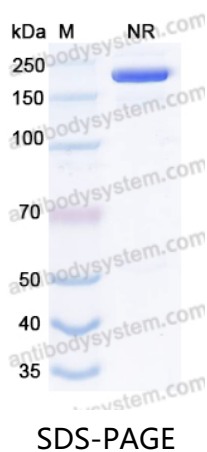
---

Recombinant Proteins & Antibodies

<b>Endotoxin level</b>	Please contact with the lab for this information.
<b>Expression system</b>	Mammalian Cells
<b>Accession</b>	P28907 & P07766
<b>Stability and Storage</b>	Use a manual defrost freezer and avoid repeated freeze-thaw cycles. Store at 4°C short term (1-2 weeks). Store at -20°C 12 months. Store at -80°C long term.
<b>Note</b>	For research use only. Not suitable for clinical or therapeutic use.

## Data Image

---



SDS PAGE for AMG-424