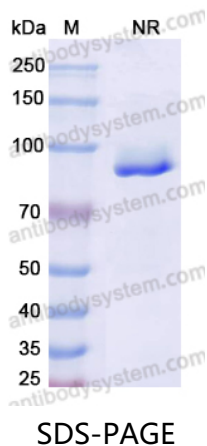


Anti-Human PLAC1 Antibody (SAA2101)

Summary

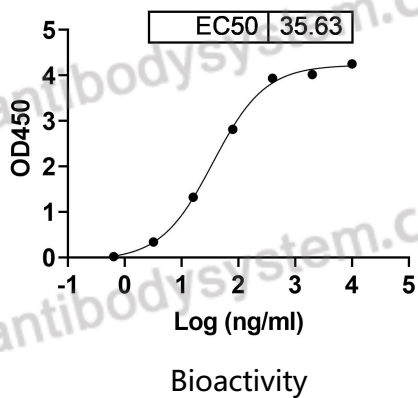
Catalog No.	RHN07104
Clone ID	SAA2101
Host species	Human
Species reactivity	Human
Form	Liquid
Storage buffer	0.01M PBS, pH 7.4.
Concentration	3.61 mg/ml
Purity	>95% as determined by SDS-PAGE.
Clonality	Monoclonal
Isotype	VHH-hFc
Applications	ELISA, WB
Target	Placenta-specific protein 1, PLAC1
Purification	Protein A/G purified from cell culture supernatant.
Endotoxin level	Please contact with the lab for this information.
Accession	Q9HBJ0
Stability and Storage	Use a manual defrost freezer and avoid repeated freeze-thaw cycles. Store at 4°C short term (1-2 weeks). Store at -20°C 12 months. Store at -80°C long term.
Note	For research use only.

Data Image



SDS PAGE for Human PLAC1 Antibody

Clone: SAA2101 binds with Human PLAC1



Detects PLAC1([YHN07101](#)) in indirect ELISAs.