

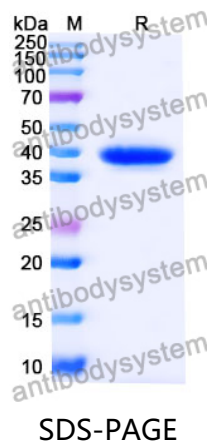
# Anti-Human PLAC1 Antibody (SAA2100)

## Summary

---

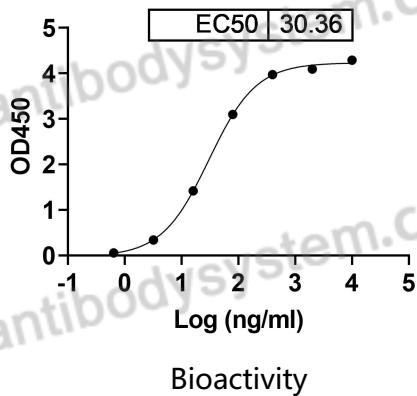
<b>Catalog No.</b>	RHN07103
<b>Clone ID</b>	SAA2100
<b>Host species</b>	Human
<b>Species reactivity</b>	Human
<b>Form</b>	Liquid
<b>Storage buffer</b>	0.01M PBS, pH 7.4.
<b>Concentration</b>	1 mg/ml
<b>Purity</b>	>95% as determined by SDS-PAGE.
<b>Clonality</b>	Monoclonal
<b>Isotype</b>	VHH-hFc
<b>Applications</b>	ELISA, WB
<b>Target</b>	Placenta-specific protein 1, PLAC1
<b>Purification</b>	Protein A/G purified from cell culture supernatant.
<b>Endotoxin level</b>	Please contact with the lab for this information.
<b>Accession</b>	Q9HBJ0
<b>Stability and Storage</b>	Use a manual defrost freezer and avoid repeated freeze-thaw cycles. Store at 4°C short term (1-2 weeks). Store at -20°C 12 months. Store at -80°C long term.
<b>Note</b>	For research use only.

## Data Image



SDS PAGE for Human PLAC1 Antibody (SAA2100)

Clone: SAA2100 binds with Human PLAC1



Detects PLAC1([YHN07101](#)) in indirect ELISAs.