

# Anti-Human TREM2 Antibody (SAA2090)

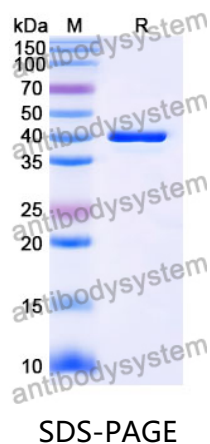
## Summary

---

|                              |                                                                                                                                                                 |
|------------------------------|-----------------------------------------------------------------------------------------------------------------------------------------------------------------|
| <b>Catalog No.</b>           | RHJ69205                                                                                                                                                        |
| <b>Clone ID</b>              | SAA2090                                                                                                                                                         |
| <b>Host species</b>          | Human                                                                                                                                                           |
| <b>Species reactivity</b>    | Human                                                                                                                                                           |
| <b>Form</b>                  | Liquid                                                                                                                                                          |
| <b>Storage buffer</b>        | 0.01M PBS, pH 7.4.                                                                                                                                              |
| <b>Concentration</b>         | 1 mg/ml                                                                                                                                                         |
| <b>Purity</b>                | >95% as determined by SDS-PAGE.                                                                                                                                 |
| <b>Clonality</b>             | Monoclonal                                                                                                                                                      |
| <b>Isotype</b>               | VHH-hFc                                                                                                                                                         |
| <b>Applications</b>          | ELISA                                                                                                                                                           |
| <b>Target</b>                | Triggering receptor expressed on myeloid cells 2, Triggering receptor expressed on monocytes 2, TREM-2, TREM2                                                   |
| <b>Purification</b>          | Protein A/G purified from cell culture supernatant.                                                                                                             |
| <b>Endotoxin level</b>       | Please contact with the lab for this information.                                                                                                               |
| <b>Accession</b>             | Q9NZC2                                                                                                                                                          |
| <b>Stability and Storage</b> | Use a manual defrost freezer and avoid repeated freeze-thaw cycles.<br>Store at 4°C short term (1-2 weeks). Store at -20°C 12 months. Store at -80°C long term. |
| <b>Note</b>                  | For research use only.                                                                                                                                          |

## Data Image

---



SDS PAGE for Human TREM2 Antibody (SAA2090)