

Anti-BVDV Envelope glycoprotein E2 Antibody (SAA2088)

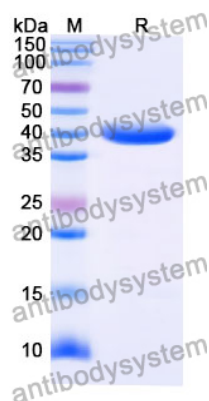
Summary

Catalog No.	RVV14705
Clone ID	SAA2088
Host species	Human
Species reactivity	Bovine viral diarrhea virus (isolate NADL) (BVDV) (Mucosal disease virus)
Form	Liquid
Storage buffer	0.01M PBS, pH 7.4.
Concentration	1 mg/ml
Purity	>95% as determined by SDS-PAGE.
Clonality	Monoclonal
Isotype	VHH-hFc
Applications	ELISA
Target	Genome polyprotein, Envelope glycoprotein E2, gp55
Purification	Protein A/G purified from cell culture supernatant.
Endotoxin level	Please contact with the lab for this information.
Accession	P19711
Stability and Storage	Use a manual defrost freezer and avoid repeated freeze-thaw cycles. Store at 4°C short term (1-2 weeks). Store at -20°C 12 months. Store at -80°C long term.

Note

For research use only.

Data Image



SDS-PAGE

SDS PAGE for BVDV Envelope glycoprotein E2
Antibody (SAA2088)