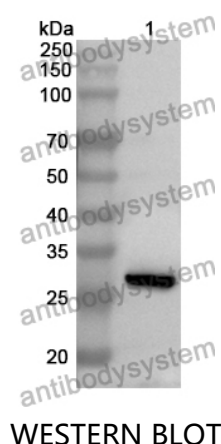


Anti-MPP5 Polyclonal Antibody

Summary

Catalog No.	PHJ21401
Host species	Rabbit
Tested applications	ELISA: 1:4000-1:8000, IHC: 1:50-1:100, WB: 1:1000-1:4000
Species reactivity	Human, Mouse, Rat
Immunogen	E. coli - derived recombinant Human MPP5 (Asn455-Arg675).
Form	Liquid
Storage buffer	0.01M PBS, pH 7.4, 50% Glycerol, 0.05% Proclin 300.
Clonality	Polyclonal
Isotype	IgG
Applications	ELISA, IHC, WB
Target	PALS1,MAGUK p55 subfamily member 5,MPP5
Purification	Purified by antigen affinity column.
Accession	Q8N3R9
Stability and Storage	Use a manual defrost freezer and avoid repeated freeze thaw cycles. Store at 2 to 8°C for frequent use. Store at -20 to -80°C for twelve months from the date of receipt.
Note	For research use only.

Data Image



Recombinant Protein lysates were subjected to SDS PAGE followed by western blot with MPP5 antibody (PHJ21401) at 1 µg/ml.

Lane 1: Recombinant protein

Second Ab: Goat Anti-Rabbit IgG H&L Polyclonal antibody, HRP (PTB96431) at 0.1 µg/mL.

Predict MW: 28 kDa

Observed MW: 28 kDa

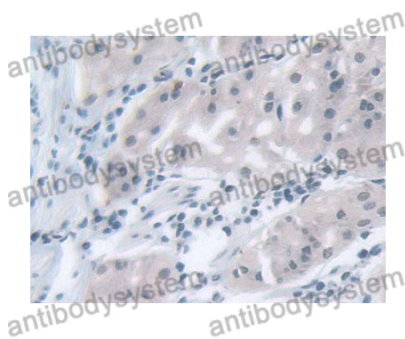
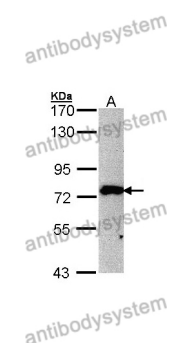
Various lysates were subjected to SDS PAGE followed by western blot with MPP5 antibody (PHJ21401) at 1 µg/ml.

Lane 1: 293T

Second Ab: Goat Anti-Rabbit IgG H&L Polyclonal antibody, HRP (PTB96431) at 0.1 µg/mL.

Predict MW: 77 kDa

Observed MW: 77 kDa



Immunohistochemical

Immunohistochemical analysis of Human Stomach stained for MPP5 with PHJ21401.