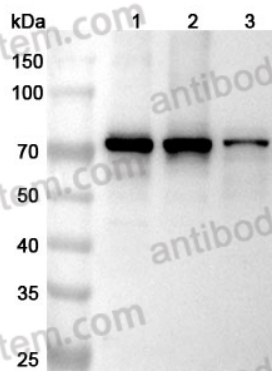


Anti-Mouse SPHK2 Polyclonal Antibody

Summary

| | |
|------------------------------|---------------------------------------------------------------------------------------------------------------------------------------------------------------------------|
| Catalog No. | PMK41801 |
| Host species | Rabbit |
| Tested applications | ELISA: 1:4000-1:8000, IHC: 1:50-1:100, WB: 1:1000-1:4000 |
| Species reactivity | Mouse |
| Immunogen | E. coli - derived recombinant Mouse SPHK2 (Ile15-Gly276). |
| Form | Liquid |
| Storage buffer | 0.01M PBS, pH 7.4, 50% Glycerol, 0.05% Proclin 300. |
| Clonality | Polyclonal |
| Isotype | IgG |
| Applications | ELISA, IHC, WB |
| Target | SK2, Sphingosine kinase 2, SPHK2, SK 2, SPK 2 |
| Purification | Purified by antigen affinity column. |
| Accession | Q9JIA7 |
| Stability and Storage | Use a manual defrost freezer and avoid repeated freeze thaw cycles. Store at 2 to 8°C for frequent use. Store at -20 to -80°C for twelve months from the date of receipt. |
| Note | For research use only. |

Data Image



Western Blot

Various lysates were subjected to SDS PAGE followed by western blot with SPHK2 antibody (PMK41801) at 1 μ g/ml.

Lane 1: HCT116 cell lysate

Lane 2: Raji cell lysate

Lane 3: LO2 cell lysate

Second Ab: Goat Anti-Rabbit IgG H&L Polyclonal antibody, HRP (PTB96431) at 0.1 μ g/mL.

Predict MW: 66 kDa

Observed MW: 70 kDa