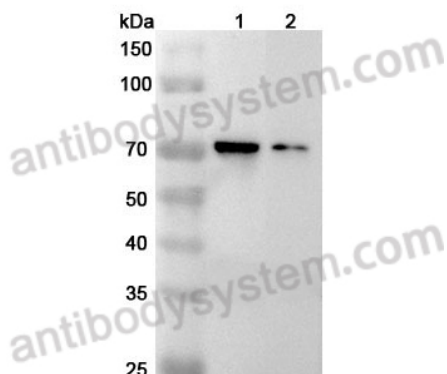


Anti-Mouse IL1RL2/IL-36R Polyclonal Antibody

Summary

Catalog No.	PMJ58901
Host species	Rabbit
Tested applications	ELISA: 1:4000-1:8000, IHC: 1:50-1:100, WB: 1:1000-1:4000
Species reactivity	Mouse
Immunogen	E. coli - derived recombinant Mouse IL1RL2/IL-36R (Met29-Ile331).
Form	Liquid
Storage buffer	0.01M PBS, pH 7.4, 50% Glycerol, 0.05% Proclin 300.
Clonality	Polyclonal
Isotype	IgG
Applications	ELISA, IHC, WB
Target	IL1R-rp2, IL1RL2, IL1RRP2, IL-1Rrp2, IL-36 receptor, Interleukin-1 receptor-related protein 2, Interleukin-1 receptor-like 2, IL-36R
Purification	Purified by antigen affinity column.
Accession	Q9ERS7
Stability and Storage	Use a manual defrost freezer and avoid repeated freeze thaw cycles. Store at 2 to 8°C for frequent use. Store at -20 to -80°C for twelve months from the date of receipt.
Note	For research use only.

Data Image



WESTERN-BLOT

Various lysates were subjected to SDS PAGE followed by western blot with IL1RL2 antibody (PMJ58901) at 1 μ g/ml.

Lane 1: K562 cell lysate

Lane 2: HL-60 cell lysate

Second Ab: Goat Anti-Rabbit IgG H&L Polyclonal antibody, HRP (PTB96431) at 0.1 μ g/mL.

Predict MW: 65 kDa

Observed MW: 70 kDa