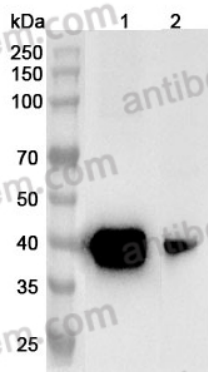


Anti-Mouse ASGR1 Polyclonal Antibody

Summary

Catalog No.	PMC24401
Host species	Rabbit
Tested applications	ELISA: 1:4000-1:8000, IHC: 1:50-1:100, WB: 1:1000-1:4000
Species reactivity	Mouse
Immunogen	E. coli - derived recombinant Mouse ASGR1 (Asn156-Asn284).
Form	Liquid
Storage buffer	0.01M PBS, pH 7.4, 50% Glycerol, 0.05% Proclin 300.
Clonality	Polyclonal
Isotype	IgG
Applications	ELISA, IHC, WB
Target	HL-1, ASGP-R 1, Asialoglycoprotein receptor 1, CLEC4H1, ASGR1, C-type lectin domain family 4 member H1, ASGPR 1, Hepatic lectin H1
Purification	Purified by antigen affinity column.
Accession	P34927
Stability and Storage	Use a manual defrost freezer and avoid repeated freeze thaw cycles. Store at 2 to 8°C for frequent use. Store at -20 to -80°C for twelve months from the date of receipt.
Note	For research use only.

Data Image



Western Blot

Various lysates were subjected to SDS PAGE followed by western blot with ASGR1 antibody (PMC24401) at 1 μ g/ml.

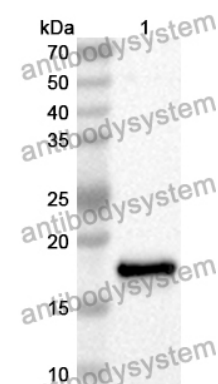
Lane 1: Mouse liver lysate

Lane 2: Rat liver lysate

Second Ab: Goat Anti-Rabbit IgG H&L Polyclonal antibody, HRP (PTB96431) at 0.1 μ g/mL.

Predict MW: 33 kDa

Observed MW: 40 kDa



Western Blot

Recombinant Protein lysates were subjected to SDS PAGE followed by western blot with ASGR1 antibody (PMC24401) at 1 μ g/ml.

Lane 1: Recombinant protein

Second Ab: Goat Anti-Rabbit IgG H&L Polyclonal antibody, HRP (PTB96431) at 0.1 μ g/mL.

Predict MW: 18 kDa

Observed MW: 18 kDa