

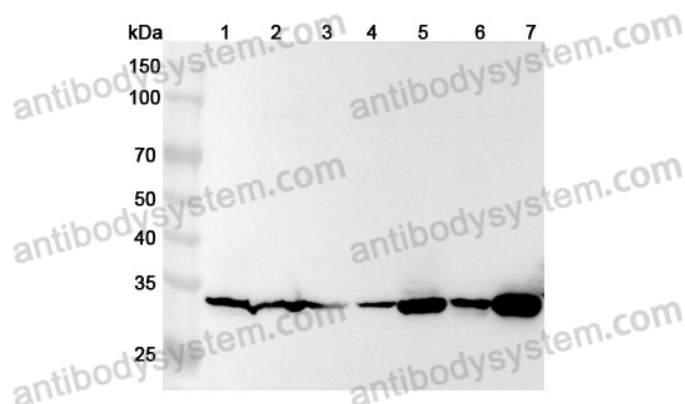
Anti-Human TPM4 Polyclonal Antibody

Summary

Catalog No.	PHF61601
Host species	Rabbit
Tested applications	ELISA: 1:4000-1:8000, IHC: 1:50-1:100, WB: 1:1000-1:4000
Species reactivity	Human
Immunogen	E. coli - derived recombinant Human TPM4 (Met1-Ile248).
Form	Liquid
Storage buffer	0.01M PBS, pH 7.4, 50% Glycerol, 0.05% Proclin 300.
Clonality	Polyclonal
Isotype	IgG
Applications	ELISA, IHC, WB
Target	Tropomyosin alpha-4 chain, Tropomyosin-4, TM30p1, TPM4
Purification	Purified by antigen affinity column.
Accession	P67936
Stability and Storage	Use a manual defrost freezer and avoid repeated freeze thaw cycles. Store at 2 to 8°C for frequent use. Store at -20 to -80°C for twelve months from the date of receipt.
Note	For research use only.

Data Image

Various lysates were subjected to SDS PAGE followed by western blot with TPM4 antibody (PHF61601) at 1 µg/ml.



Western Blot

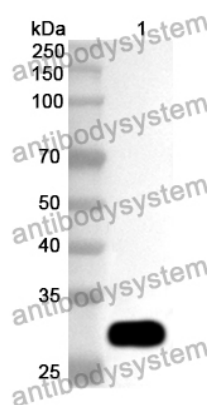
Lane 1: A431 cell lysate
 Lane 2: HepG2 cell lysate
 Lane 3: HepG2 cell lysate
 Lane 4: HT-29 cell lysate
 Lane 5: C2C12 cell lysate
 Lane 6: Jurkat cell lysate
 Lane 7: U87 cell lysate

Second Ab: Goat Anti-Rabbit IgG H&L Polyclonal antibody, HRP (PTB96431) at 0.1 µg/mL.

Predict MW: 33 kDa

Observed MW: 33 kDa

Recombinant Protein lysates were subjected to SDS PAGE followed by western blot with TPM4 antibody (PHF61601) at 1 µg/ml.



Western Blot

Lane 1: Recombinant protein

Second Ab: Goat Anti-Rabbit IgG H&L Polyclonal antibody, HRP (PTB96431) at 0.1 µg/mL.

Predict MW: 31 kDa

Observed MW: 31 kDa