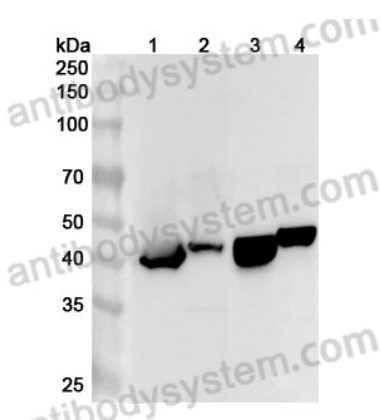


Anti-Human GATM Polyclonal Antibody

Summary

Catalog No.	PHE76201
Host species	Rabbit
Tested applications	ELISA: 1:4000-1:8000, IHC: 1:50-1:100, WB: 1:1000-1:4000
Species reactivity	Human
Immunogen	E. coli - derived recombinant Human GATM (Glu76-Asp423).
Form	Liquid
Storage buffer	0.01M PBS, pH 7.4, 50% Glycerol, 0.05% Proclin 300.
Clonality	Polyclonal
Isotype	IgG
Applications	ELISA, IHC, WB
Target	Glycine amidinotransferase, mitochondrial, L-arginine:glycine amidinotransferase, GATM, Transamidinase, AGAT
Purification	Purified by antigen affinity column.
Accession	P50440
Stability and Storage	Use a manual defrost freezer and avoid repeated freeze thaw cycles. Store at 2 to 8°C for frequent use. Store at -20 to -80°C for twelve months from the date of receipt.
Note	For research use only.

Data Image



Western Blot

Various lysates were subjected to SDS PAGE followed by western blot with GATM1 antibody (PHE76201) at 1 μ g/ml.

Lane 1: Mouse kidney lysate

Lane 2: Mouse pancears lysate

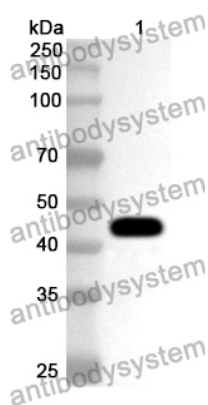
Lane 3: Rat kidney lysate

Lane 4: Rat pancears lysat

Second Ab: Goat Anti-Rabbit IgG H&L Polyclonal antibody, HRP (PTB96431) at 0.1 μ g/mL.

Predict MW: 45 kDa

Observed MW: 45 kDa



Western Blot

Recombinant Protein lysates were subjected to SDS PAGE followed by western blot with GATM antibody (PHE76201) at 1 μ g/ml.

Lane 1: Recombinant protein

Second Ab: Goat Anti-Rabbit IgG H&L Polyclonal antibody, HRP (PTB96431) at 0.1 μ g/mL.

Predict MW: 43 kDa

Observed MW: 43 kDa