

# Anti-Human ATP5PO Polyclonal Antibody

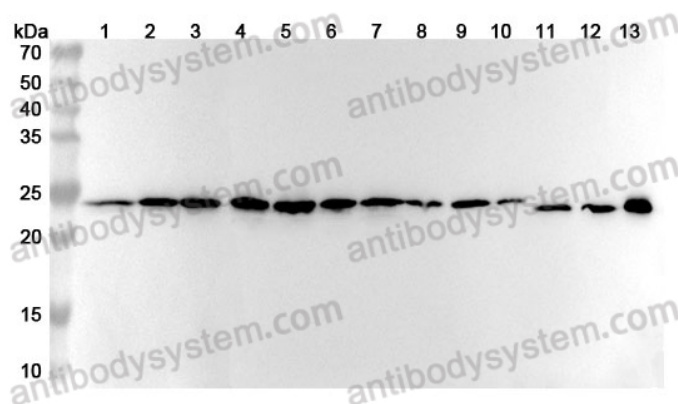
## Summary

---

<b>Catalog No.</b>	PHE54601
<b>Host species</b>	Rabbit
<b>Tested applications</b>	ELISA: 1:4000-1:8000, IHC: 1:50-1:100, WB: 1:1000-1:4000
<b>Species reactivity</b>	Human
<b>Immunogen</b>	E. coli - derived recombinant Human ATP5PO (Gly36-Val213).
<b>Form</b>	Liquid
<b>Storage buffer</b>	0.01M PBS, pH 7.4, 50% Glycerol, 0.05% Proclin 300.
<b>Clonality</b>	Polyclonal
<b>Isotype</b>	IgG
<b>Applications</b>	ELISA, IHC, WB
<b>Target</b>	ATP synthase peripheral stalk subunit OSCP, ATP5O, Oligomycin sensitivity conferral protein, ATP5PO, OSCP, ATP5O, ATP synthase subunit O, mitochondrial
<b>Purification</b>	Purified by antigen affinity column.
<b>Accession</b>	P48047
<b>Stability and Storage</b>	Use a manual defrost freezer and avoid repeated freeze thaw cycles. Store at 2 to 8°C for frequent use. Store at -20 to -80°C for twelve months from the date of receipt.
<b>Note</b>	For research use only.

## Data Image

---



Western Blot

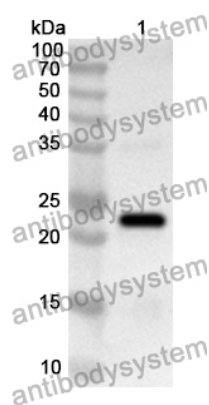
Various lysates were subjected to SDS PAGE followed by western blot with ATP5PO antibody (PHE54601) at 1 µg/ml.

Lane 1: A549 cell lysate  
 Lane 2: SKOV3 cell lysate  
 Lane 3: MCF-7 cell lysate  
 Lane 4: Jurkat cell lysate  
 Lane 5: HepG2 cell lysate  
 Lane 6: 293T cell lysate  
 Lane 7: Hela cell lysate  
 Lane 8: Mouse brain lysate  
 Lane 9: Mouse heart lysate  
 Lane 10: Mouse liver lysate  
 Lane 11: Rat brain lysate  
 Lane 12: Rat heart lysate  
 Lane 13: Rat liver lysate

Second Ab: Goat Anti-Rabbit IgG H&L Polyclonal antibody, HRP (PTB96431) at 0.1 µg/mL.

Predict MW: 23 kDa

Observed MW: 24 kDa



Western Blot

Recombinant Protein lysates were subjected to SDS PAGE followed by western blot with ATP5PO antibody (PHE54601) at 1 µg/ml.

Lane 1: Recombinant protein

Second Ab: Goat Anti-Rabbit IgG H&L Polyclonal antibody, HRP (PTB96431) at 0.1 µg/mL.

Predict MW: 22 kDa

Observed MW: 22 kDa