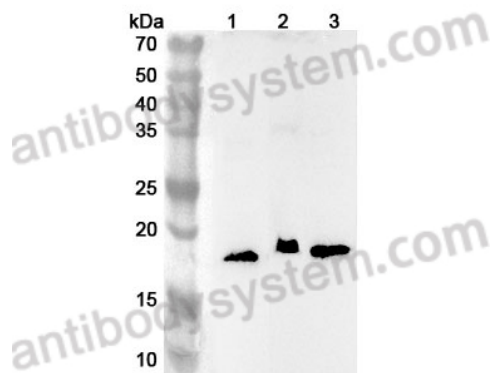


Anti-Human RPL28 Polyclonal Antibody

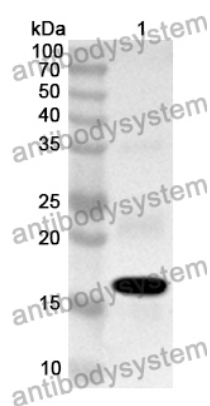
Summary

Catalog No.	PHE49301
Host species	Rabbit
Tested applications	ELISA: 1:4000-1:8000, IHC: 1:50-1:100, WB: 1:1000-1:4000
Species reactivity	Human
Immunogen	E. coli - derived recombinant Human RPL28 (Met1-Lys122).
Form	Liquid
Storage buffer	0.01M PBS, pH 7.4, 50% Glycerol, 0.05% Proclin 300.
Clonality	Polyclonal
Isotype	IgG
Applications	ELISA, IHC, WB
Target	Large ribosomal subunit protein eL28, 60S ribosomal protein L28, RPL28
Purification	Purified by antigen affinity column.
Accession	P46779
Stability and Storage	Use a manual defrost freezer and avoid repeated freeze thaw cycles. Store at 2 to 8°C for frequent use. Store at -20 to -80°C for twelve months from the date of receipt.
Note	For research use only.

Data Image



Western Blot



Western Blot

Various lysates were subjected to SDS PAGE followed by western blot with RPL28 antibody (PHE49301) at 1 μ g/ml.

Lane 1: 293T cell lysate

Lane 2: Mouse liver lysate

Lane 3: Mouse spleen

Second Ab: Goat Anti-Rabbit IgG H&L Polyclonal antibody, HRP (PTB96431) at 0.1 μ g/mL.

Predict MW: 16 kDa

Observed MW: 16 kDa

Recombinant Protein lysates were subjected to SDS PAGE followed by western blot with RPL28 antibody (PHE49301) at 1 μ g/ml.

Lane 1: Recombinant protein

Second Ab: Goat Anti-Rabbit IgG H&L Polyclonal antibody, HRP (PTB96431) at 0.1 μ g/mL.

Predict MW: 16 kDa

Observed MW: 16 kDa