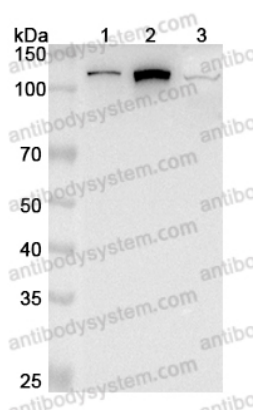


Anti-PITRM1 Polyclonal Antibody

Summary

Catalog No.	PHJ01801
Host species	Rabbit
Tested applications	ELISA: 1:4000-1:8000, IHC: 1:50-1:100, WB: 1:1000-1:4000
Species reactivity	Human, Mouse, Rat
Immunogen	E. coli - derived recombinant Human PITRM1 (Leu544-Ser806).
Form	Liquid
Storage buffer	0.01M PBS, pH 7.4, 50% Glycerol, 0.05% Proclin 300.
Clonality	Polyclonal
Isotype	IgG
Applications	ELISA, IHC, WB
Target	Pitrilysin metalloproteinase 1,hMP1,MP1,Metalloprotease 1,PREP,KIAA1104,Presequence protease,mitochondrial,PITRM1,hPreP
Purification	Purified by antigen affinity column.
Accession	Q5JRX3
Stability and Storage	Use a manual defrost freezer and avoid repeated freeze thaw cycles. Store at 2 to 8°C for frequent use. Store at -20 to -80°C for twelve months from the date of receipt.
Note	For research use only.

Data Image



Western Blot

Various lysates were subjected to SDS PAGE followed by western blot with PITRM1 antibody (PHJ01801) at 1 μ g/ml.

Lane 1: MCF7 cell lysate

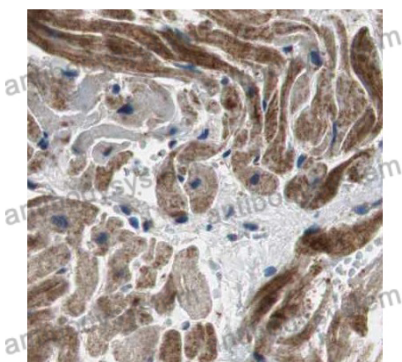
Lane 2: 293T cell lysate

Lane 3: Mouse kidney lysate

Second Ab: Goat Anti-Rabbit IgG H&L Polyclonal antibody, HRP (PTB96431) at 0.1 μ g/mL.

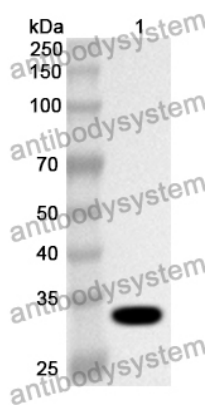
Predict MW: 117 kDa

Observed MW: 117 kDa



Immunohistochemical

Immunohistochemical analysis of human heart muscle stained for PITRM1 with PHJ01801.



Western Blot

Recombinant Protein lysates were subjected to SDS PAGE followed by western blot with PITRM1 antibody (PHJ01801) at 1 μ g/ml.

Lane 1: Recombinant Protein

Second Ab: Goat Anti-Rabbit IgG H&L Polyclonal antibody, HRP (PTB96431) at 0.1 μ g/mL.

Predict MW: 32 kDa

Observed MW: 32 kDa