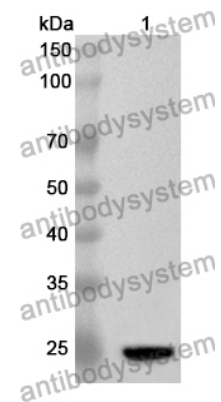


Anti-UBE2S Polyclonal Antibody

Summary

Catalog No.	PHH36301
Host species	Rabbit
Tested applications	ELISA: 1:4000-1:8000, IHC: 1:50-1:100, WB: 1:1000-1:4000
Species reactivity	Human, Mouse, Rat
Immunogen	E. coli - derived recombinant Human UBE2S (Met1-Ala209).
Form	Liquid
Storage buffer	0.01M PBS, pH 7.4, 50% Glycerol, 0.05% Proclin 300.
Clonality	Polyclonal
Isotype	IgG
Applications	ELISA, IHC, WB
Target	Ubiquitin-protein ligase S,E2EPF,Ubiquitin-conjugating enzyme E2 S,E2-EPF,Ubiquitin-conjugating enzyme E2-EPF5,Ubiquitin-conjugating enzyme E2-24 kDa,E2 ubiquitin-conjugating enzyme S,Ubiquitin carrier protein S,UBE2S
Purification	Purified by antigen affinity column.
Accession	Q16763
Stability and Storage	Use a manual defrost freezer and avoid repeated freeze thaw cycles. Store at 2 to 8°C for frequent use. Store at -20 to -80°C for twelve months from the date of receipt.
Note	For research use only.

Data Image



WESTERN BLOT

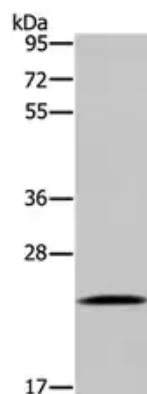
Recombinant Protein lysates were subjected to SDS PAGE followed by western blot with UBE2S antibody (PHH36301) at 1 μ g/ml.

Lane 1: Recombinant protein

Second Ab: Goat Anti-Rabbit IgG H&L Polyclonal antibody, HRP (PTB96431) at 0.1 μ g/mL.

Predict MW: 25 kDa

Observed MW: 25 kDa



Western Blot

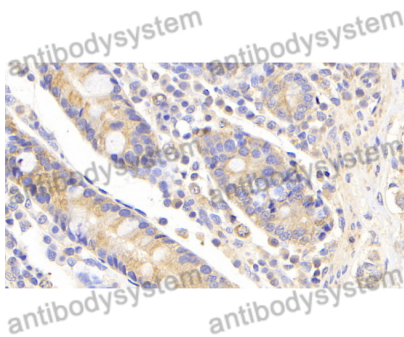
Various lysates were subjected to SDS PAGE followed by western blot with UBE2S antibody (PHH36301) at 1 μ g/ml.

Lane 1: Human testis

Second Ab: Goat Anti-Rabbit IgG H&L Polyclonal antibody, HRP (PTB96431) at 0.1 μ g/mL.

Predict MW: 24 kDa

Observed MW: 24 kDa



Immunohistochemical

Immunohistochemical analysis of human intestine stained for UBE2S with PHH36301.