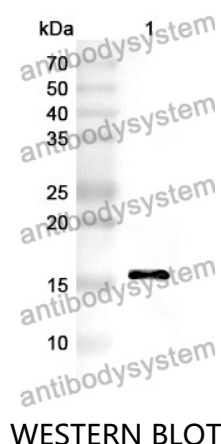


Anti-CST6 Polyclonal Antibody

Summary

Catalog No.	PHH21001
Host species	Rabbit
Tested applications	ELISA: 1:4000-1:8000, IHC: 1:50-1:100, WB: 1:1000-1:4000
Species reactivity	Human
Immunogen	E. coli - derived recombinant Human CST6 (Arg29-Met149).
Form	Liquid
Storage buffer	0.01M PBS, pH 7.4, 50% Glycerol, 0.05% Proclin 300.
Clonality	Polyclonal
Isotype	IgG
Applications	ELISA, IHC, WB
Target	CST6,Cystatin-M,Cystatin-6,Cystatin-E
Purification	Purified by antigen affinity column.
Accession	Q15828
Stability and Storage	Use a manual defrost freezer and avoid repeated freeze thaw cycles. Store at 2 to 8°C for frequent use. Store at -20 to -80°C for twelve months from the date of receipt.
Note	For research use only.

Data Image



WESTERN BLOT

Recombinant Protein lysates were subjected to SDS PAGE followed by western blot with CST6 antibody (PHH21001) at 1 µg/ml.

Lane 1: Recombinant protein

Second Ab: Goat Anti-Rabbit IgG H&L Polyclonal antibody, HRP (PTB96431) at 0.1 µg/mL.

Predict MW: 16 kDa

Observed MW: 16 kDa

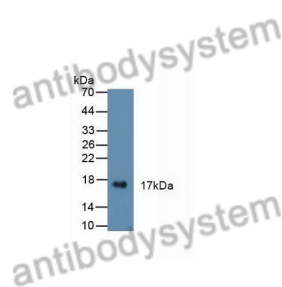
Various lysates were subjected to SDS PAGE followed by western blot with CST6 antibody (PHH21001) at 1 µg/ml.

Lane 1: Human Urine

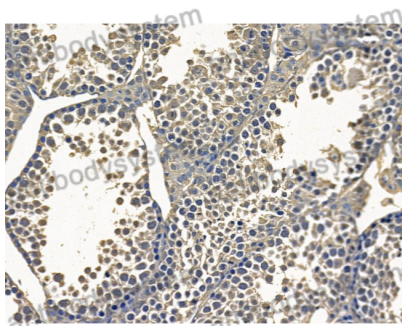
Second Ab: Goat Anti-Rabbit IgG H&L Polyclonal antibody, HRP (PTB96431) at 0.1 µg/mL.

Predict MW: 17 kDa

Observed MW: 17 kDa



Western Blot



Immunohistochemical

Immunohistochemical analysis of mouse testis stained for CST6 with PHH21001.