

# Anti-Bordetella pertussis ptxA/PTXS1 Polyclonal Antibody

## Summary

---

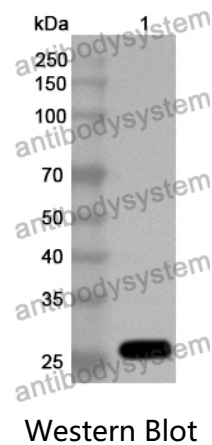
<b>Catalog No.</b>	PXX03501
<b>Host species</b>	Rabbit
<b>Tested applications</b>	ELISA: 1:4000-1:8000, IHC: 1:50-1:200, WB: 1:500-1:4000
<b>Species reactivity</b>	Bordetella pertussis (strain Tohama I / ATCC BAA-589 / NCTC 13251)
<b>Immunogen</b>	E. coli - derived recombinant Bordetella pertussis ptxA/PTXS (Asp35-Phe269).
<b>Form</b>	Liquid
<b>Storage buffer</b>	0.01M PBS, pH 7.4, 50% Glycerol, 0.05% Proclin 300.
<b>Concentration</b>	0.65 mg/ml
<b>Clonality</b>	Polyclonal
<b>Isotype</b>	IgG
<b>Applications</b>	ELISA, IHC, WB
<b>Target</b>	Pertussis toxin subunit 1, PTX S1, Islet-activating protein S1, IAP S1, NAD-dependent ADP-ribosyltransferase, 2.4.2.-, ptxA, BP3783
<b>Purification</b>	Purified by antigen affinity column.
<b>Accession</b>	P04977
<b>Stability and Storage</b>	Use a manual defrost freezer and avoid repeated freeze thaw cycles. Store at 2 to 8°C for frequent use. Store at -20 to -80°C for twelve months from the date of receipt.

**Note**

For research use only.

## Data Image

---



Recombinant Protein lysates were subjected to SDS PAGE followed by western blot with ptxA/PTXS1 antibody (PXX03501) at 1 µg/ml.

Lane 1: Recombinant protein

Second Ab: Goat Anti-Rabbit IgG H&L Polyclonal antibody, HRP (PTB96431) at 0.1 µg/mL.

Predict MW: 27 kDa

Observed MW: 27 kDa