

# Anti-SETDB1 Polyclonal Antibody

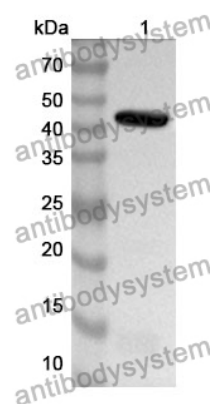
## Summary

---

|                              |  |
|------------------------------|--|
| <b>Catalog No.</b>           | PHG99501   |
| <b>Host species</b>          | Rabbit   |
| <b>Tested applications</b>   | ELISA: 1:4000-1:8000, IHC: 1:50-1:100, WB: 1:1000-1:4000   |
| <b>Species reactivity</b>    | Human, Mouse, Rat  |
| <b>Immunogen</b>             | E. coli - derived recombinant Human SETDB1 (Met1-Ser350).  |
| <b>Form</b>                  | Liquid   |
| <b>Storage buffer</b>        | 0.01M PBS, pH 7.4, 50% Glycerol, 0.05% Proclin 300.  |
| <b>Clonality</b>             | Polyclonal   |
| <b>Isotype</b>               | IgG  |
| <b>Applications</b>          | ELISA, IHC, WB   |
| <b>Target</b>                | H3-K9-HMTase 4,ESET,SETDB1,SET domain bifurcated 1,Histone H3-K9 methyltransferase 4,KMT1E,KIAA0067,Lysine N-methyltransferase 1E,ERG-associated protein with SET domain,Histone-lysine N-methyltransferase SETDB1 |
| <b>Purification</b>          | Purified by antigen affinity column.   |
| <b>Accession</b>             | Q15047   |
| <b>Stability and Storage</b> | Use a manual defrost freezer and avoid repeated freeze thaw cycles. Store at 2 to 8°C for frequent use. Store at -20 to -80°C for twelve months from the date of receipt.  |
| <b>Note</b>                  | For research use only.   |

## Data Image

---



Western Blot

Recombinant Protein lysates were subjected to SDS PAGE followed by western blot with SETDB1 antibody (PHG99501) at 1  $\mu$ g/ml.

Lane 1: Recombinant protein

Second Ab: Goat Anti-Rabbit IgG H&L Polyclonal antibody, HRP (PTB96431) at 0.1  $\mu$ g/mL.

Predict MW: 42 kDa

Observed MW: 42 kDa