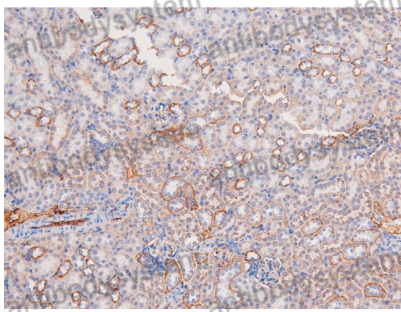
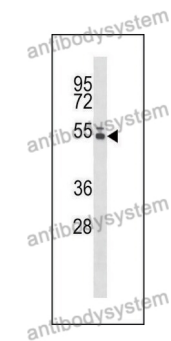
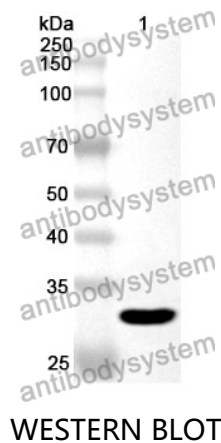


Anti-PTK6 Polyclonal Antibody

Summary

Catalog No.	PHG66301
Host species	Rabbit
Tested applications	ELISA: 1:4000-1:8000, IHC: 1:50-1:100, WB: 1:1000-1:4000
Species reactivity	Human, Mouse, Rat
Immunogen	E. coli - derived recombinant Human PTK6 (Phe191-Thr445).
Form	Liquid
Storage buffer	0.01M PBS, pH 7.4, 50% Glycerol, 0.05% Proclin 300.
Clonality	Polyclonal
Isotype	IgG
Applications	ELISA, IHC, WB
Target	Protein-tyrosine kinase 6, BRK, PTK6, Breast tumor kinase, Tyrosine-protein kinase BRK
Purification	Purified by antigen affinity column.
Accession	Q13882
Stability and Storage	Use a manual defrost freezer and avoid repeated freeze thaw cycles. Store at 2 to 8°C for frequent use. Store at -20 to -80°C for twelve months from the date of receipt.
Note	For research use only.

Data Image



Immunohistochemical

Recombinant Protein lysates were subjected to SDS PAGE followed by western blot with PTK6 antibody (PHG66301) at 1 μ g/ml.

Lane 1: Recombinant protein

Second Ab: Goat Anti-Rabbit IgG H&L Polyclonal antibody, HRP (PTB96431) at 0.1 μ g/mL.

Predict MW: 32 kDa

Observed MW: 32 kDa

Various lysates were subjected to SDS PAGE followed by western blot with PTK6 antibody (PHG66301) at 1 μ g/ml.

Lane 1: Mouse heart

Second Ab: Goat Anti-Rabbit IgG H&L Polyclonal antibody, HRP (PTB96431) at 0.1 μ g/mL.

Predict MW: 52 kDa

Observed MW: 52 kDa

Immunohistochemical analysis of mouse kidney stained for PTK6 with PHG66301.