

Anti-Human ATF4/CREB2 Antibody (N360A/24)

Summary

Catalog No.	RHD31102
Clone ID	N360A/24
Host species	Mouse
Species reactivity	Human, Rat
Form	Liquid
Storage buffer	0.01M PBS, pH 7.4.
Concentration	1 mg/ml
Purity	>95% as determined by SDS-PAGE.
Clonality	Monoclonal
Isotype	IgG2a
Applications	IHC, WB
Target	ATF4, CREB2, TXREB, Cyclic AMP-dependent transcription factor ATF-4, cAMP-dependent transcription factor ATF-4, Activating transcription factor 4, Cyclic AMP-responsive element-binding protein 2, CREB-2, cAMP-responsive element-binding protein 2, Tax-responsive enhancer element-binding protein 67, TaxREB67
Purification	Protein A/G purified from cell culture supernatant.
Endotoxin level	Please contact with the lab for this information.
Accession	P18848

Recombinant Proteins & Antibodies

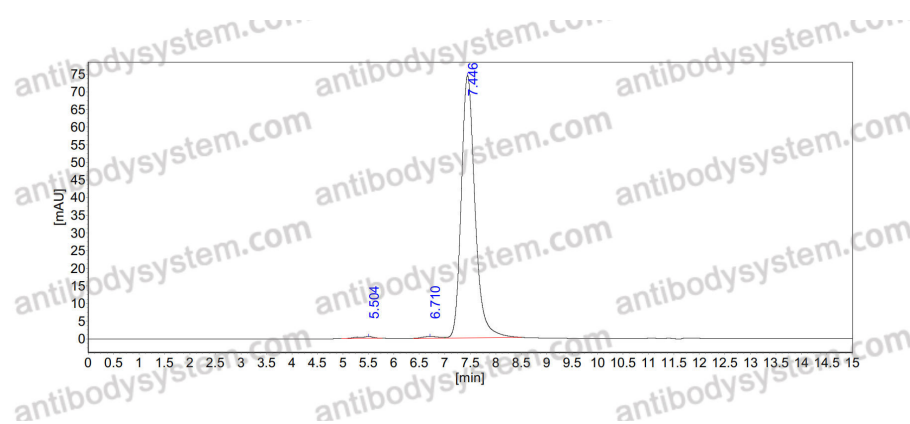
Stability and Storage

Use a manual defrost freezer and avoid repeated freeze-thaw cycles.

Store at 4°C short term (1-2 weeks). Store at -20°C 12 months. Store at -80°C long term.

Note

For research use only.

Data Image

SEC-HPLC

The purity of this product is >95% as determined by SEC-HPLC.