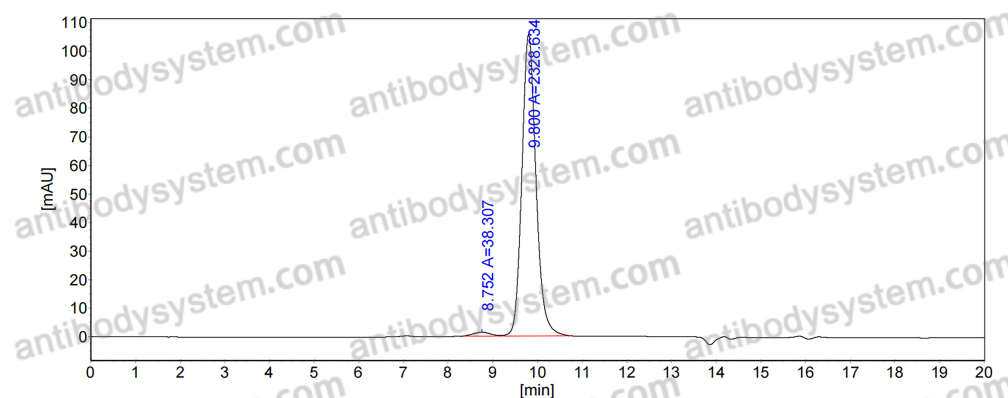


Anti-Kir2.1 K⁺ channel Antibody (N112B/22)

Summary

Catalog No.	RHF60403
Clone ID	N112B/22
Host species	Mouse
Form	Liquid
Storage buffer	0.01M PBS, pH 7.4.
Concentration	1.2 mg/ml
Purity	>95% as determined by SDS-PAGE.
Clonality	Monoclonal
Isotype	IgG2a, kappa
Applications	IHC, WB
Target	IRK1, Cardiac inward rectifier potassium channel, IRK-1, Inward rectifier potassium channel 2, hIRK1, KCNJ2, Inward rectifier K(+) channel Kir2.1, Potassium channel, inwardly rectifying subfamily J member 2
Purification	Protein A/G purified from cell culture supernatant.
Endotoxin level	Please contact with the lab for this information.
Stability and Storage	Use a manual defrost freezer and avoid repeated freeze-thaw cycles. Store at 4°C short term (1-2 weeks). Store at -20°C 12 months. Store at -80°C long term.
Note	For research use only.

Data Image



SEC-HPLC

The purity of this product is
>95% as determined by SEC-
HPLC.