

# Anti-Kir2.1 K<sup>+</sup> channel Antibody (N112/16)

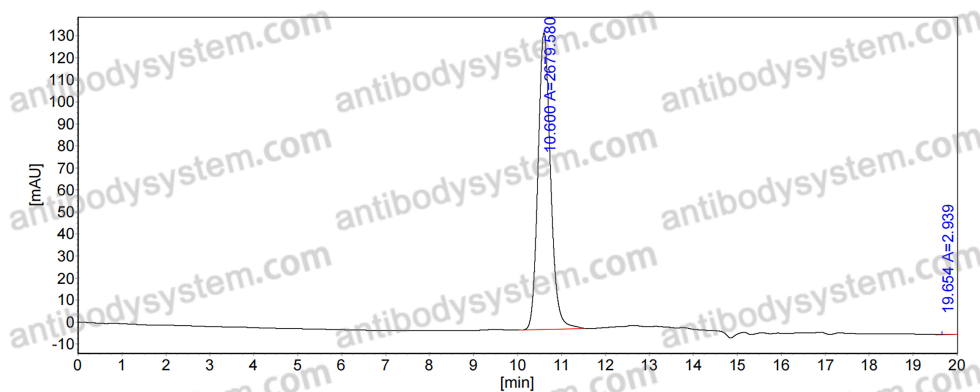
## Summary

---

<b>Catalog No.</b>	RHF60401
<b>Clone ID</b>	N112/16
<b>Host species</b>	Mouse
<b>Form</b>	Liquid
<b>Storage buffer</b>	0.01M PBS, pH 7.4.
<b>Concentration</b>	1.56 mg/ml
<b>Purity</b>	>95% as determined by SDS-PAGE.
<b>Clonality</b>	Monoclonal
<b>Isotype</b>	IgG2a, kappa
<b>Applications</b>	IHC, WB
<b>Target</b>	IRK1, Cardiac inward rectifier potassium channel, IRK-1, Inward rectifier potassium channel 2, hIRK1, KCNJ2, Inward rectifier K(+) channel Kir2.1, Potassium channel, inwardly rectifying subfamily J member 2
<b>Purification</b>	Protein A/G purified from cell culture supernatant.
<b>Endotoxin level</b>	Please contact with the lab for this information.
<b>Stability and Storage</b>	Use a manual defrost freezer and avoid repeated freeze-thaw cycles. Store at 4°C short term (1-2 weeks). Store at -20°C 12 months. Store at -80°C long term.
<b>Note</b>	For research use only.

## Data Image

---



SEC-HPLC

The purity of this product is  
>95% as determined by SEC-  
HPLC.