

# Anti-ABAT Polyclonal Antibody

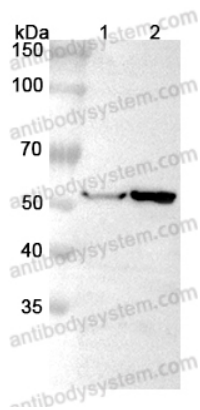
## Summary

---

<b>Catalog No.</b>	PHF71501
<b>Host species</b>	Rabbit
<b>Tested applications</b>	ELISA: 1:4000-1:8000, IHC: 1:50-1:100, WB: 1:1000-1:4000
<b>Species reactivity</b>	Human, Mouse, Rat
<b>Immunogen</b>	E. coli - derived recombinant Human ABAT (Pro249-Lys500).
<b>Form</b>	Liquid
<b>Storage buffer</b>	0.01M PBS, pH 7.4, 50% Glycerol, 0.05% Proclin 300.
<b>Clonality</b>	Polyclonal
<b>Isotype</b>	IgG
<b>Applications</b>	ELISA, IHC, WB
<b>Target</b>	Gamma-amino-N-butyrate transaminase, GABA transaminase, (S)-3-amino-2-methylpropionate transaminase, GABA aminotransferase, L-AIBAT, GABA-T, ABAT, 4-aminobutyrate aminotransferase, mitochondrial, GABA-AT, GABAT
<b>Purification</b>	Purified by antigen affinity column.
<b>Accession</b>	P80404
<b>Stability and Storage</b>	Use a manual defrost freezer and avoid repeated freeze thaw cycles. Store at 2 to 8°C for frequent use. Store at -20 to -80°C for twelve months from the date of receipt.
<b>Note</b>	For research use only.

## Data Image

---



Western Blot

Various lysates were subjected to SDS PAGE followed by western blot with ABAT antibody (PHF71501) at 1 $\mu$ g/ml.

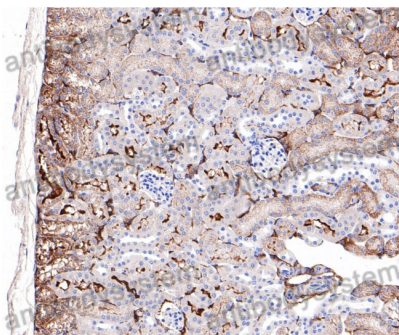
Lane 1: Rat liver lysate

Lane 2: Rat kidney lysate

Second Ab: Goat Anti-Rabbit IgG H&L Polyclonal antibody, HRP (PTB96431) at 0.1  $\mu$ g/mL.

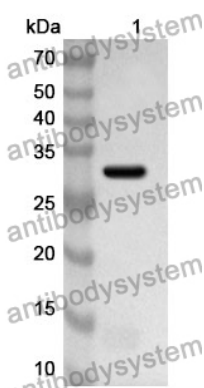
Predict MW: 56 kDa

Observed MW: 56 kDa



Immunohistochemical

Immunohistochemical analysis of mouse kidney stained for ABAT with PHF71501.



Western Blot

Recombinant Protein lysates were subjected to SDS PAGE followed by western blot with ABAT antibody (PHF71501) at 1  $\mu$ g/ml.

Lane 1: Recombinant Protein

Second Ab: Goat Anti-Rabbit IgG H&L Polyclonal antibody, HRP (PTB96431) at 0.1  $\mu$ g/mL.

Predict MW: 31 kDa

Observed MW: 31 kDa