

Anti-Human FAP/FAPalpha Antibody (SAA2014)

Summary

Catalog No.	RHG32201
Clone ID	SAA2014
Host species	Human
Species reactivity	Human
Form	Liquid
Storage buffer	0.01M PBS, pH 7.4.
Concentration	1 mg/ml
Purity	>95% as determined by SDS-PAGE.
Clonality	Monoclonal
Isotype	IgG1, kappa
Applications	ELISA, FCM, WB
Target	Surface-expressed protease, Gelatine degradation protease FAP, Integral membrane serine protease, Dipeptidyl peptidase FAP, Seprase, FAP, Post-proline cleaving enzyme, APCE, SIMP, FAPalpha, 170 kDa melanoma membrane-bound gelatinase, Fibroblast activation protein alpha, Serine integral membrane protease, Prolyl endopeptidase FAP
Purification	Protein A/G purified from cell culture supernatant.
Endotoxin level	Please contact with the lab for this information.
Accession	Q12884

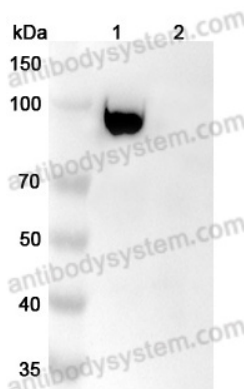
Stability and Storage

Use a manual defrost freezer and avoid repeated freeze-thaw cycles.
Store at 4°C short term (1-2 weeks). Store at -20°C 12 months. Store at -80°C long term.

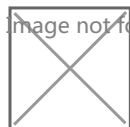
Note

For research use only.

Data Image



Western Blot



Flow-cytometry

Various lysates were subjected to SDS PAGE followed by western blot with Anti Human FAP/FAPalpha & IL2V antibody [SAA2014] (RHG32201) at 1µg/ml.

Lane 1: Human FAP/FAPalpha & IL2V transfected HEK293 cell lysate

Lane 2: Non-transfected HEK293 cell lysate

Second Ab: Goat Anti-Human IgG H&L Polyclonal antibody, HRP (PHB96431) at 0.1 µg/mL.

Predict MW: 88 kDa

Flow-cytometry using anti-human FAP antibody. U87 cells were stained with an irrelevant antibody (Blue Histogram) or an anti-human FAP antibody monoclonal antibody (Catalog # RHG32201, Green Histogram) at a concentration of 5 µg/ml for 30 mins at RT. After washing, bound antibody was detected using a FITC conjugated goat anti-human antibody (Catalog # PHB96441) and cells analysed on a NovoCyte Flow Cytometer.