

# Anti-Human CD340/ERBB2/HER2 Antibody (SAA2012)

## Summary

---

|                           |  |
|---------------------------|--|
| <b>Catalog No.</b>        | RHC09604   |
| <b>Clone ID</b>           | SAA2012  |
| <b>Host species</b>       | Human  |
| <b>Species reactivity</b> | Human  |
| <b>Form</b>               | Liquid   |
| <b>Storage buffer</b>     | 0.01M PBS, pH 7.4.   |
| <b>Concentration</b>      | 1 mg/ml  |
| <b>Purity</b>             | >95% as determined by SDS-PAGE.  |
| <b>Clonality</b>          | Monoclonal   |
| <b>Isotype</b>            | IgG1, kappa  |
| <b>Applications</b>       | ELISA, FCM, WB   |
| <b>Target</b>             | p185erbB2, HER2, NGL, Tyrosine kinase-type cell surface receptor HER2, NEU, MLN 19, Proto-oncogene Neu, MLN19, ERBB2, Proto-oncogene c-ErbB-2, CD340, Receptor tyrosine-protein kinase erbB-2, Metastatic lymph node gene 19 protein |
| <b>Purification</b>       | Protein A/G purified from cell culture supernatant.  |
| <b>Endotoxin level</b>    | Please contact with the lab for this information.  |
| <b>Accession</b>          | P04626   |

**Stability and Storage**

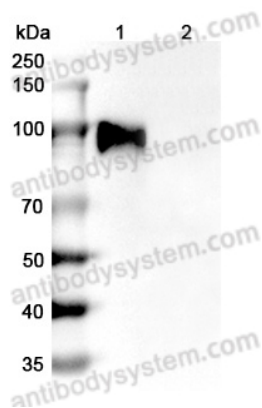
Use a manual defrost freezer and avoid repeated freeze-thaw cycles.

Store at 4°C short term (1-2 weeks). Store at -20°C 12 months. Store at -80°C long term.

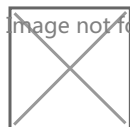
**Note**

For research use only.

## Data Image



Western Blot



Flow-cytometry

Various lysates were subjected to SDS PAGE followed by western blot with Anti Human CD340/ERBB2/HER2 & ERBB3/HER3 antibody [SAA2012] (RHC09604) at 1µg/ml.

Lane 1: Human CD340/ERBB2/HER2 & ERBB3/HER3 transfected HEK293 cell lysate

Lane 2: Non-transfected HEK293 cell lysate

Second Ab: Goat Anti-Human IgG H&L Polyclonal antibody, HRP (PHB96431) at 0.1 µg/mL.

Predict MW: 72 kDa

Flow-cytometry using anti-human CD340 & ERBB3 antibody. HeLa cells were stained with an irrelevant antibody (Blue Histogram) or an anti-human CD340 & ERBB3 antibody monoclonal antibody (Catalog # RHC09604, Green Histogram) at a concentration of 5 µg/ml for 30 mins at RT. After washing, bound antibody was detected using a FITC conjugated goat anti-human antibody (Catalog # PHB96441) and cells analysed on a NovoCyte Flow Cytometer.