

Anti-Mouse IL36B/IL-1F8 Polyclonal Antibody

Summary

Catalog No.	PMJ69601
Host species	Rabbit
Tested applications	ELISA: 1:4000-1:8000, IHC: 1:50-1:100, WB: 1:1000-1:4000
Species reactivity	Mouse
Immunogen	E. coli - derived recombinant Mouse IL36B/IL-1F8 (Arg36-Lys183).
Form	Liquid
Storage buffer	0.01M PBS, pH 7.4, 50% Glycerol, 0.05% Proclin 300.
Clonality	Polyclonal
Isotype	IgG
Applications	ELISA, IHC, WB
Target	Interleukin-36 beta (Interleukin-1 family member 8) (IL-1F8)
Purification	Purified by antigen affinity column.
Accession	Q9D6Z6
Stability and Storage	Use a manual defrost freezer and avoid repeated freeze thaw cycles. Store at 2 to 8°C for frequent use. Store at -20 to -80°C for twelve months from the date of receipt.
Note	For research use only.

Data Image

Various lysates were subjected to SDS PAGE followed by western blot with IL36B antibody (PMJ69601) at 1 μ g/ml.

Lane 1: A549 cell lysate

Lane 2: 293T cell lysate

Second Ab: Goat Anti-Rabbit IgG H&L Polyclonal antibody, HRP (PTB96431) at 0.1 μ g/mL.

Predict MW: 21 kDa

Observed MW: 15 kDa

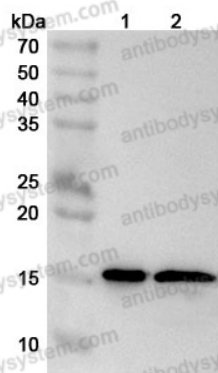
Recombinant Protein lysates were subjected to SDS PAGE followed by western blot with IL36B/IL-1F8 antibody (PMJ69601) at 1 μ g/ml.

Lane 1: Recombinant Protein

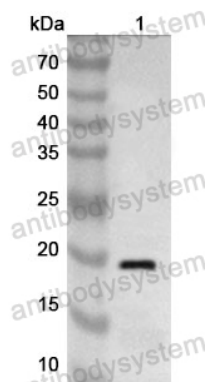
Second Ab: Goat Anti-Rabbit IgG H&L Polyclonal antibody, HRP (PTB96431) at 0.1 μ g/mL.

Predict MW: 19 kDa

Observed MW: 19 kDa



Western Blot



Western Blot