

Anti-Mouse IL1RL1/ST2 Polyclonal Antibody

Summary

Catalog No.	PMF88301
Host species	Rabbit
Tested applications	ELISA: 1:4000-1:8000, IHC: 1:50-1:100, WB: 1:1000-1:4000
Species reactivity	Mouse
Immunogen	E. coli - derived recombinant Mouse IL1RL1/ST2 (Ser27-Arg332).
Form	Liquid
Storage buffer	0.01M PBS, pH 7.4, 50% Glycerol, 0.05% Proclin 300.
Clonality	Polyclonal
Isotype	IgG
Applications	ELISA, IHC, WB
Target	Interleukin-1 receptor-like 1 (EC 3.2.2.6) (Interleukin-33 receptor alpha chain) (Lymphocyte antigen 84) (Protein ST2) (Protein T1)
Purification	Purified by antigen affinity column.
Accession	P14719
Stability and Storage	Use a manual defrost freezer and avoid repeated freeze thaw cycles. Store at 2 to 8°C for frequent use. Store at -20 to -80°C for twelve months from the date of receipt.
Note	For research use only.

Data Image

Various lysates were subjected to SDS PAGE followed by western blot with IL1RL1 antibody (PMF88301) at 1 μ g/ml.

Lane 1: Hela cell lysate
Lane 2: SGC-7901 cell lysate
Lane 3: HUVEC cell lysate
Lane 4: HepG2 cell lysate
Lane 5: Mouse brain lysate

Second Ab: Goat Anti-Rabbit IgG H&L
Polyclonal antibody, HRP (PTB96431) at 0.1 μ g/mL.

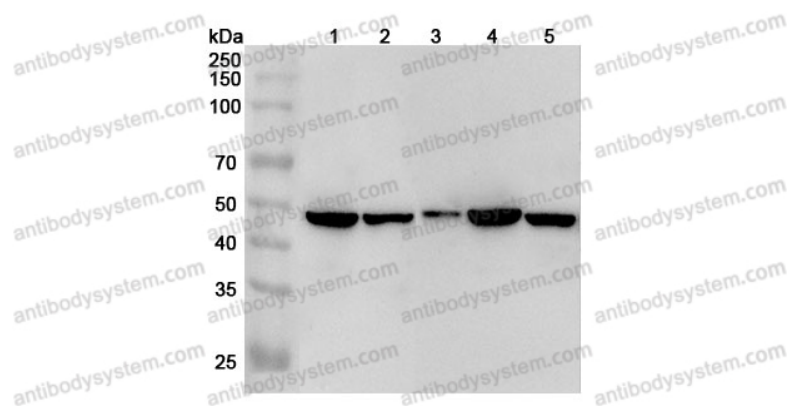
Predict MW: 65 kDa
Observed MW: 48 kDa

Recombinant Protein lysates were subjected to SDS PAGE followed by western blot with IL1RL1/ST2 antibody (PMF88301) at 1 μ g/ml.

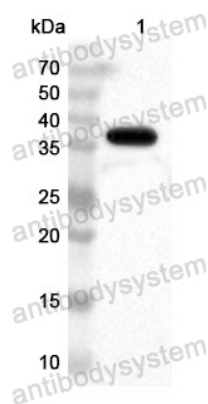
Lane 1: Recombinant Protein

Second Ab: Goat Anti-Rabbit IgG H&L
Polyclonal antibody, HRP (PTB96431) at 0.1 μ g/mL.

Predict MW: 37 kDa
Observed MW: 37 kDa



Western Blot



Western Blot