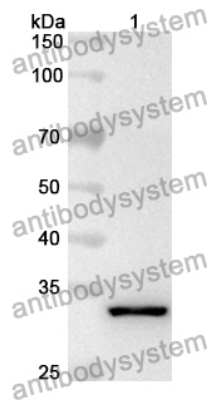


Anti-Human SLC25A37 Polyclonal Antibody

Summary

Catalog No.	PHK91501
Host species	Rabbit
Tested applications	ELISA: 1:4000-1:8000, IHC: 1:50-1:100, WB: 1:1000-1:4000
Species reactivity	Human
Immunogen	E. coli - derived recombinant Human SLC25A37 (Pro65-Arg105).
Form	Liquid
Storage buffer	0.01M PBS, pH 7.4, 50% Glycerol, 0.05% Proclin 300.
Clonality	Polyclonal
Isotype	IgG
Applications	ELISA, IHC, WB
Target	SLC25A37, Solute carrier family 25 member 37, Mitochondrial iron transporter 1, MSCP, Mitochondrial solute carrier protein, MFRN, Mitoferrin-1
Purification	Purified by antigen affinity column.
Accession	Q9NYZ2
Stability and Storage	Use a manual defrost freezer and avoid repeated freeze thaw cycles. Store at 2 to 8°C for frequent use. Store at -20 to -80°C for twelve months from the date of receipt.
Note	For research use only.

Data Image



Western Blot

Recombinant Protein lysates were subjected to SDS PAGE followed by western blot with SLC25A37 antibody (PHK91501) at 1 $\mu\text{g/ml}$.

Lane 1: Recombinant protein

Second Ab: Goat Anti-Rabbit IgG H&L Polyclonal antibody, HRP (PTB96431) at 0.1 $\mu\text{g/mL}$.

Predict MW: 33 kDa

Observed MW: 33 kDa