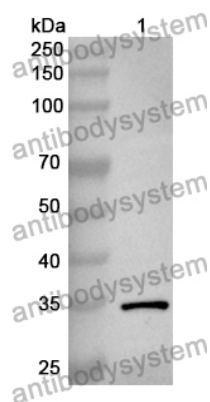


Anti-Human LBR Polyclonal Antibody

Summary

Catalog No.	PHG89001
Host species	Rabbit
Tested applications	ELISA: 1:4000-1:8000, IHC: 1:50-1:100, WB: 1:1000-1:4000
Species reactivity	Human
Immunogen	E. coli - derived recombinant Human LBR (Ala7-Arg61).
Form	Liquid
Storage buffer	0.01M PBS, pH 7.4, 50% Glycerol, 0.05% Proclin 300.
Clonality	Polyclonal
Isotype	IgG
Applications	ELISA, IHC, WB
Target	LMN2R, LBR, C14SR, Integral nuclear envelope inner membrane protein, Sterol C14-reductase, 3-beta-hydroxysterol Delta (14)-reductase, Delta(14)-sterol reductase LBR, Lamin-B receptor, Delta-14-SR, C-14 sterol reductase
Purification	Purified by antigen affinity column.
Accession	Q14739
Stability and Storage	Use a manual defrost freezer and avoid repeated freeze thaw cycles. Store at 2 to 8°C for frequent use. Store at -20 to -80°C for twelve months from the date of receipt.
Note	For research use only.

Data Image



Western Blot

Recombinant Protein lysates were subjected to SDS PAGE followed by western blot with LBR antibody (PHG89001) at 1 μ g/ml.

Lane 1: Recombinant protein

Second Ab: Goat Anti-Rabbit IgG H&L Polyclonal antibody, HRP (PTB96431) at 0.1 μ g/mL.

Predict MW: 35 kDa

Observed MW: 35 kDa