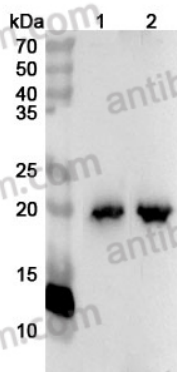


Anti-MYL7 Polyclonal Antibody

Summary

Catalog No.	PHF86801
Host species	Rabbit
Tested applications	ELISA: 1:4000-1:8000, IHC: 1:50-1:100, WB: 1:1000-1:4000
Species reactivity	Human, Mouse
Immunogen	E. coli - derived recombinant Human MYL7 (Glu30-Glu175).
Form	Liquid
Storage buffer	0.01M PBS, pH 7.4, 50% Glycerol, 0.05% Proclin 300.
Clonality	Polyclonal
Isotype	IgG
Applications	ELISA, IHC, WB
Target	MYLC2A, Myosin regulatory light chain 7, MLC-2a, Myosin light chain 2a, MYL7, MYL2A, MLC2a, Myosin regulatory light chain 2, atrial isoform
Purification	Purified by antigen affinity column.
Accession	Q01449
Stability and Storage	Use a manual defrost freezer and avoid repeated freeze thaw cycles. Store at 2 to 8°C for frequent use. Store at -20 to -80°C for twelve months from the date of receipt.
Note	For research use only.

Data Image



Western Blot

Various lysates were subjected to SDS PAGE followed by western blot with MYL7 antibody (PHF86801) at 1 μ g/ml.

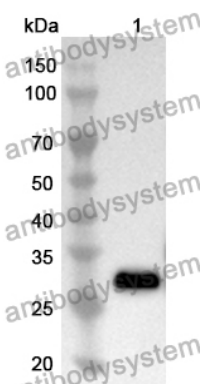
Lane 1: Mouse heart lysate

Lane 2: Rat heart lysate

Second Ab: Goat Anti-Rabbit IgG H&L Polyclonal antibody, HRP (PTB96431) at 0.1 μ g/mL.

Predict MW: 19 kDa

Observed MW: 19 kDa



Western Blot

Recombinant Protein lysates were subjected to SDS PAGE followed by western blot with MYL7 antibody (PHF86801) at 1 μ g/ml.

Lane 1: Recombinant protein

Second Ab: Goat Anti-Rabbit IgG H&L Polyclonal antibody, HRP (PTB96431) at 0.1 μ g/mL.

Predict MW: 29 kDa

Observed MW: 29 kDa