

Anti-CHOP/GADD153/DDIT3 Polyclonal Antibody

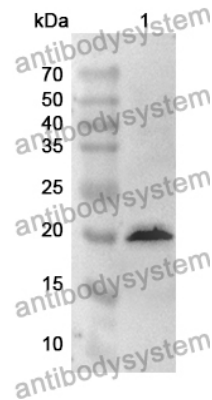
Summary

| | |
|------------------------------|------------------------------------------------------------------------------------------------------------------------------------------------------------------------------------------------------------------------------------------------------------------------|
| Catalog No. | PHE14401 |
| Host species | Rabbit |
| Tested applications | ELISA: 1:4000-1:8000, IHC: 1:50-1:100, IF: 1:50-1:100, WB: 1:1000-1:4000 |
| Species reactivity | Human, Mouse, Rat |
| Immunogen | E. coli - derived recombinant Human CHOP/GADD153/DDIT3 (Arg105-Ala169). |
| Form | Liquid |
| Storage buffer | 0.01M PBS, pH 7.4, 50% Glycerol, 0.05% Proclin 300. |
| Clonality | Polyclonal |
| Isotype | IgG |
| Applications | ELISA, IHC, IF, WB |
| Target | C/EBP-homologous protein, DDIT3, DDIT-3, CCAAT/enhancer-binding protein homologous protein, C/EBP zeta, CHOP-10, Growth arrest and DNA damage-inducible protein GADD153, DNA damage-inducible transcript 3 protein, GADD153, CHOP10, C/EBP-homologous protein 10, CHOP |
| Purification | Purified by antigen affinity column. |
| Accession | P35638 |
| Stability and Storage | Use a manual defrost freezer and avoid repeated freeze thaw cycles. Store at 2 to 8°C for frequent use. Store at -20 to -80°C for twelve months from the date of receipt. |

Note

For research use only.

Data Image



Western Blot

Recombinant Protein lysates were subjected to SDS PAGE followed by western blot with CHOP/GADD153/DDIT3 antibody (PHE14401) at 1 μ g/ml.

Lane 1: Recombinant protein

Second Ab: Goat Anti-Rabbit IgG H&L Polyclonal antibody, HRP (PTB96431) at 0.1 μ g/mL.

Predict MW: 20 kDa

Observed MW: 20 kDa