

Anti-Human NR1D1 Polyclonal Antibody

Summary

| | |
|------------------------------|---|
| Catalog No. | PHD39701 |
| Host species | Rabbit |
| Tested applications | ELISA: 1:4000-1:8000, IHC: 1:50-1:100, WB: 1:1000-1:4000 |
| Species reactivity | Human |
| Immunogen | E. coli - derived recombinant Human NR1D1 (Thr431-Gln614). |
| Form | Liquid |
| Storage buffer | 0.01M PBS, pH 7.4, 50% Glycerol, 0.05% Proclin 300. |
| Clonality | Polyclonal |
| Isotype | IgG |
| Applications | ELISA, IHC, WB |
| Target | THRAL, EAR1, EAR-1, NR1D1, Rev-erbA-alpha, Nuclear receptor subfamily 1 group D member 1, HREV, V-erbA-related protein 1 |
| Purification | Purified by antigen affinity column. |
| Accession | P20393 |
| Stability and Storage | Use a manual defrost freezer and avoid repeated freeze thaw cycles. Store at 2 to 8°C for frequent use. Store at -20 to -80°C for twelve months from the date of receipt. |
| Note | For research use only. |

Data Image

Various lysates were subjected to SDS PAGE followed by western blot with NR1D1 antibody (PHD39701) at 1 μ g/ml.

Lane 1: Mouse skeletal muscle lysate

Lane 2: Rat lung lysate

Lane 3: Rat liver lysate

Lane 4: Rat skeletal muscle lysate

Second Ab: Goat Anti-Rabbit IgG H&L

Polyclonal antibody, HRP (PTB96431) at 0.1 μ g/mL.

Predict MW: 67 kDa

Observed MW: 67 kDa

Recombinant Protein lysates were subjected to SDS PAGE followed by western blot with NR1D1 antibody (PHD39701) at 1 μ g/ml.

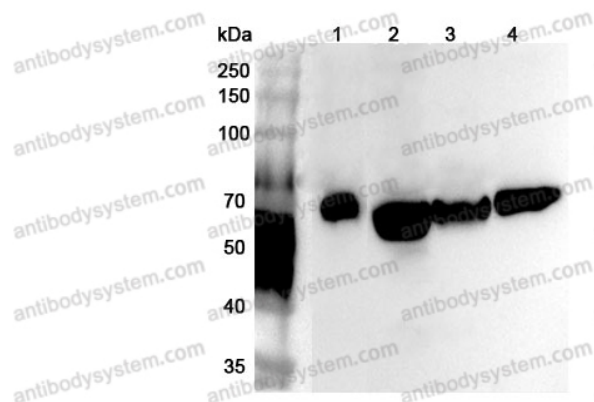
Lane 1: Recombinant Protein

Second Ab: Goat Anti-Rabbit IgG H&L

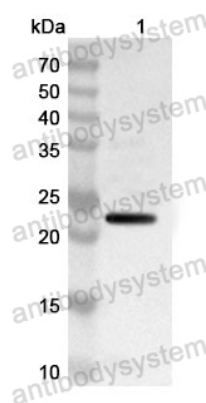
Polyclonal antibody, HRP (PTB96431) at 0.1 μ g/mL.

Predict MW: 23 kDa

Observed MW: 23 kDa



Western Blot



Western Blot