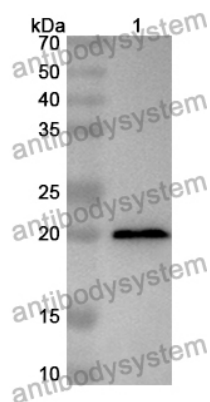


Anti-Human CCL3L1 Polyclonal Antibody

Summary

Catalog No.	PHD18901
Host species	Rabbit
Tested applications	ELISA: 1:4000-1:8000, IHC: 1:50-1:100, WB: 1:1000-1:4000
Species reactivity	Human
Immunogen	E. coli - derived recombinant Human CCL3L1 (Ser23-Ala93).
Form	Liquid
Storage buffer	0.01M PBS, pH 7.4, 50% Glycerol, 0.05% Proclin 300.
Clonality	Polyclonal
Isotype	IgG
Applications	ELISA, IHC, WB
Target	LD78-beta(1-70), CCL3L1, Small-inducible cytokine A3-like 1, G0S19-2, G0/G1 switch regulatory protein 19-2, C-C motif chemokine 3-like 1, SCYA3L1, Tonsillar lymphocyte LD78 beta protein, PAT 464.2, D17S1718
Purification	Purified by antigen affinity column.
Accession	P16619
Stability and Storage	Use a manual defrost freezer and avoid repeated freeze thaw cycles. Store at 2 to 8°C for frequent use. Store at -20 to -80°C for twelve months from the date of receipt.
Note	For research use only.

Data Image



Western Blot

Recombinant Protein lysates were subjected to SDS PAGE followed by western blot with CCL3L1 antibody (PHD18901) at 1 μ g/ml.

Lane 1: Recombinant protein

Second Ab: Goat Anti-Rabbit IgG H&L Polyclonal antibody, HRP (PTB96431) at 0.1 μ g/mL.

Predict MW: 20 kDa

Observed MW: 20 kDa