

Anti-Human PRKCSH Polyclonal Antibody

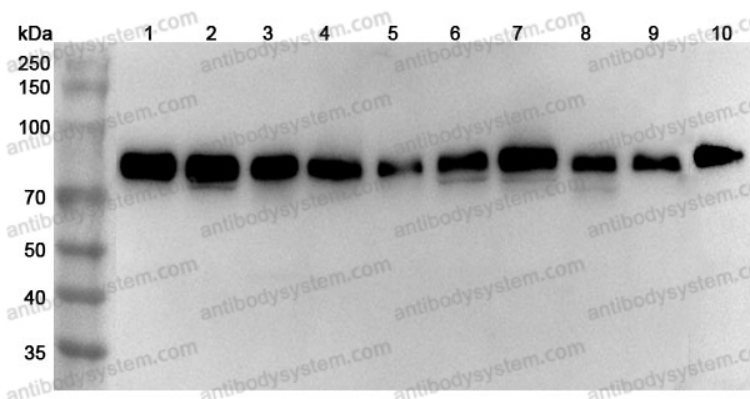
Summary

Catalog No.	PHD03901
Host species	Rabbit
Tested applications	ELISA: 1:4000-1:8000, IHC: 1:50-1:100, WB: 1:1000-1:4000
Species reactivity	Human
Immunogen	E. coli - derived recombinant Human PRKCSH (Asp401-Ala511).
Form	Liquid
Storage buffer	0.01M PBS, pH 7.4, 50% Glycerol, 0.05% Proclin 300.
Clonality	Polyclonal
Isotype	IgG
Applications	ELISA, IHC, WB
Target	Glucosidase II subunit beta, Glucosidase 2 subunit beta, 80K-H protein, G19P1, PKCSH, PRKCSH, Protein kinase C substrate 60.1 kDa protein heavy chain
Purification	Purified by antigen affinity column.
Accession	P14314
Stability and Storage	Use a manual defrost freezer and avoid repeated freeze thaw cycles. Store at 2 to 8°C for frequent use. Store at -20 to -80°C for twelve months from the date of receipt.
Note	For research use only.

Data Image

Various lysates were subjected to SDS PAGE followed by western blot with PRKCSH antibody (PHD03901) at 1 μ g/ml.

Lane 1: Hela cell lysate
 Lane 2: Jurkat cell lysate
 Lane 3: HepG2 cell lysate
 Lane 4: A549 cell lysate
 Lane 5: SKOV3 cell lysate
 Lane 6: Daudi cell lysate
 Lane 7: K562 cell lysate
 Lane 8: U87 cell lysate
 Lane 9: Mouse liver lysate
 Lane 10: Rat liver lysate



Western Blot

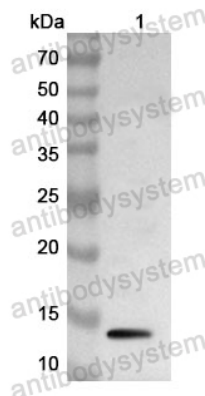
Second Ab: Goat Anti-Rabbit IgG H&L
 Polyclonal antibody, HRP (PTB96431) at 0.1 μ g/mL.

Predict MW: 59 kDa
 Observed MW: 80 kDa

Recombinant Protein lysates were subjected to SDS PAGE followed by western blot with PRKCSH antibody (PHD03901) at 1 μ g/ml.

Lane 1: Recombinant Protein

Second Ab: Goat Anti-Rabbit IgG H&L
 Polyclonal antibody, HRP (PTB96431) at 0.1 μ g/mL.



Western Blot

Predict MW: 15 kDa
 Observed MW: 15 kDa