

# Anti-HSP90AA1 Polyclonal Antibody

## Summary

---

<b>Catalog No.</b>	PHC28101
<b>Host species</b>	Rabbit
<b>Tested applications</b>	ELISA: 1:4000-1:8000, IHC: 1:50-1:100, WB: 1:1000-1:4000
<b>Species reactivity</b>	Human, Mouse, Rat
<b>Immunogen</b>	E. coli - derived recombinant Human HSP90AA1 (Ser39-Asp193).
<b>Form</b>	Liquid
<b>Storage buffer</b>	0.01M PBS, pH 7.4, 50% Glycerol, 0.05% Proclin 300.
<b>Clonality</b>	Polyclonal
<b>Isotype</b>	IgG
<b>Applications</b>	ELISA, IHC, WB
<b>Target</b>	LPS-associated protein 2, Heat shock protein HSP 90-alpha, HSPCA, HSP90A, HSP 86, Lipopolysaccharide-associated protein 2, HSP86, HSP90AA1, Heat shock 86 kDa, Renal carcinoma antigen NY-REN-38, LAP-2, HSPC1
<b>Purification</b>	Purified by antigen affinity column.
<b>Accession</b>	P07900
<b>Stability and Storage</b>	Use a manual defrost freezer and avoid repeated freeze thaw cycles. Store at 2 to 8°C for frequent use. Store at -20 to -80°C for twelve months from the date of receipt.
<b>Note</b>	For research use only.

## Data Image

Various lysates were subjected to SDS PAGE followed by western blot with HSP90AA1 antibody (PHC28101) at 1µg/ml.

Lane 1: NIH3T3 cell lysate

Lane 2: PC-12 cell lysate

Lane 3: Hela cell lysate

Lane 4: MCF-7 cell lysate

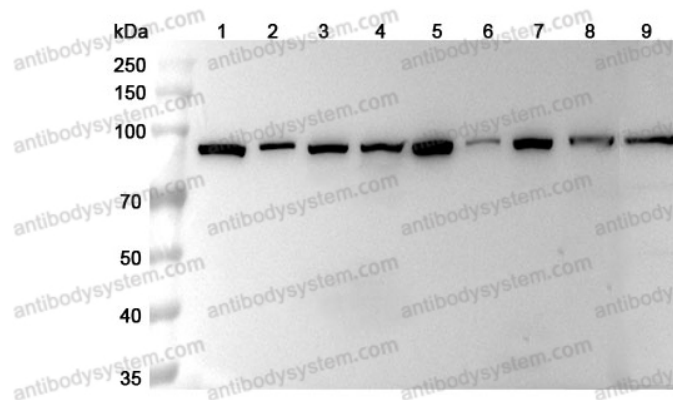
Lane 5: Jurkat cell lysate

Lane 6: Lncap cell lysate

Lane 7: Raji cell lysate

Lane 8: Mouse brain lysate

Lane 9: Rat brain lysate



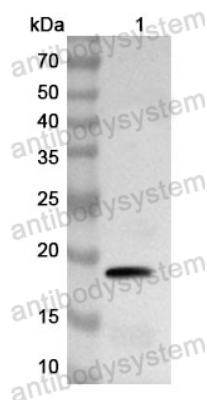
Western Blot

Second Ab: Goat Anti-Rabbit IgG H&L

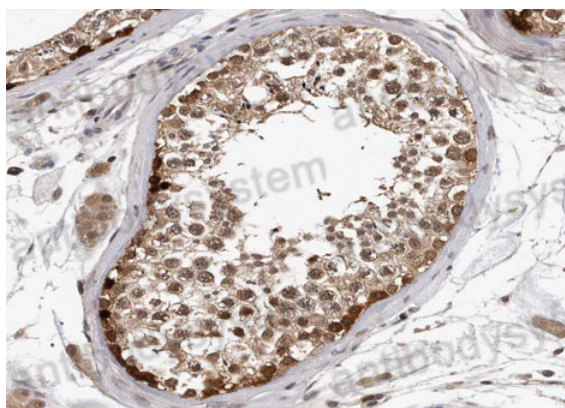
Polyclonal antibody, HRP (PTB96431) at 0.1 µg/mL.

Predict MW: 85 kDa

Observed MW: 90 kDa



Western Blot



Immunohistochemical

Recombinant Protein lysates were subjected to SDS PAGE followed by western blot with HSP90AA1 antibody (PHC28101) at 1 µg/ml.

Lane 1: Recombinant Protein

Second Ab: Goat Anti-Rabbit IgG H&L  
Polyclonal antibody, HRP (PTB96431) at 0.1 µg/mL.

Predict MW: 19 kDa

Observed MW: 19 kDa

Immunohistochemical analysis of human testis tissue stained for HSP90AA1 with PHC28101.