

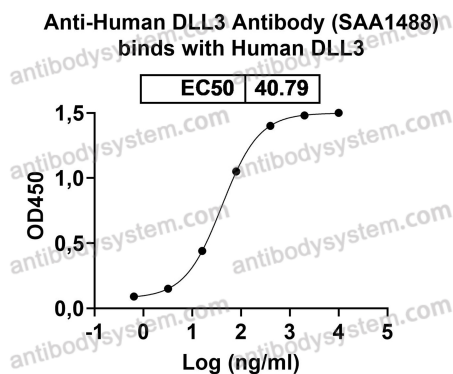
# Anti-Human DLL3 Antibody (SAA1488)

## Summary

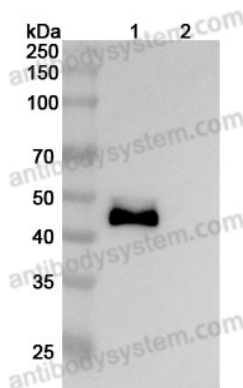
---

<b>Catalog No.</b>	FBK06420
<b>Clone ID</b>	SAA1488
<b>Host species</b>	Mouse
<b>Conjugation</b>	Unconjugated
<b>Species reactivity</b>	Human, Mouse, Rat
<b>Form</b>	Liquid
<b>Storage buffer</b>	0.01M PBS, pH 7.4
<b>Concentration</b>	1.67 mg/ml
<b>Purity</b>	>95% as determined by SDS-PAGE.
<b>Clonality</b>	Monoclonal
<b>Isotype</b>	IgG2a, kappa
<b>Applications</b>	ELISA, FCM, IHC
<b>Target</b>	Drosophila Delta homolog 3, Delta3, Delta-like protein 3, DLL3
<b>Purification</b>	Protein A/G purified from cell culture supernatant.
<b>Endotoxin level</b>	Please contact with the lab for this information.
<b>Accession</b>	Q9NYJ7
<b>Stability and Storage</b>	Use a manual defrost freezer and avoid repeated freeze-thaw cycles. Store at 4°C short term (1-2 weeks). Store at -20°C 12 months. Store at -80°C long term.
<b>Note</b>	For research use only.

## Data Image



Bioactivity



WESTERN BLOT

Detects Human DLL3 in indirect ELISAs.

Various lysates were subjected to SDS PAGE followed by western blot with DLL3 antibody (FHK06420) at 1µg/ml.

Lane 1: Human transfected HEK293 cell lysate

Lane 2: Non-transfected HEK293 cell lysate

Second Ab: Goat Anti-Mouse IgG H&L Polyclonal antibody, HRP (PMB96431) at 0.1 µg/mL.

Predict MW: 52 kDa