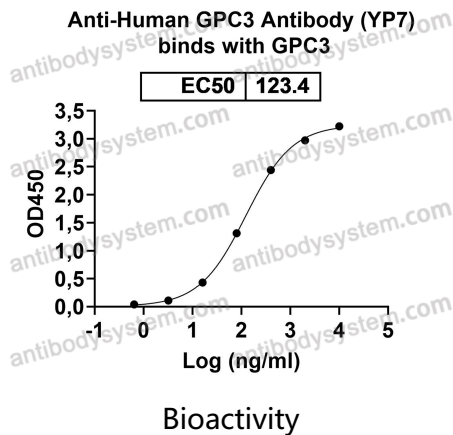


Anti-Human GPC3 Antibody (YP7)

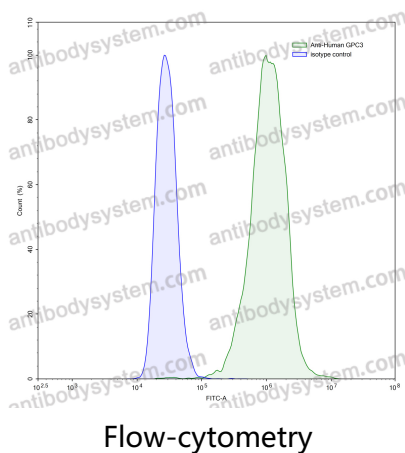
Summary

Catalog No.	RHE84602
Clone ID	YP7
Host species	Human
Species reactivity	Human, Mouse
Form	Liquid
Storage buffer	0.01M PBS, pH 7.4.
Concentration	1 mg/ml
Purity	>95% as determined by SDS-PAGE.
Clonality	Monoclonal
Isotype	IgG1, kappa
Applications	ELISA, FCM, WB
Target	GPC3, MXR7, GTR2-2, Glypican-3, Intestinal protein OCI-5, OCI5
Purification	Protein A/G purified from cell culture supernatant.
Endotoxin level	Please contact with the lab for this information.
Accession	P51654
Stability and Storage	Use a manual defrost freezer and avoid repeated freeze-thaw cycles. Store at 4°C short term (1-2 weeks). Store at -20°C 12 months. Store at -80°C long term.
Note	For research use only.

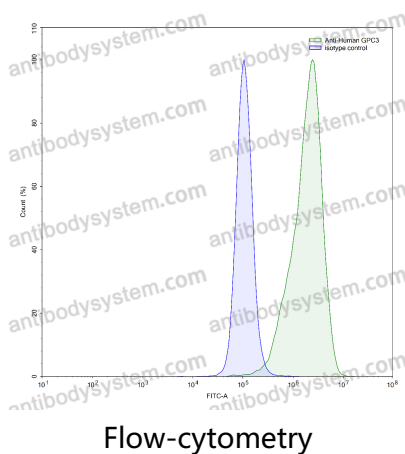
Data Image



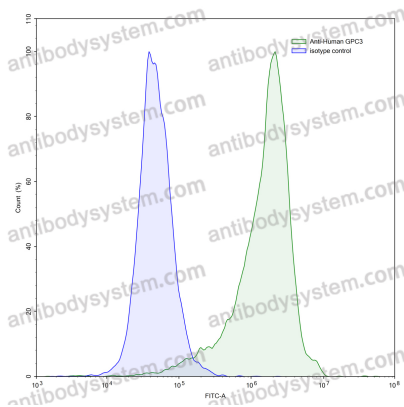
Detects Human GPC3 in indirect ELISAs.



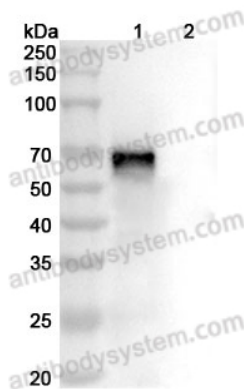
Flow-cytometry using anti-human GPC3 antibody. GPC3 Transfected CHO cells were stained with an irrelevant antibody (Blue Histogram) or an anti-human GPC3 antibody monoclonal antibody (Catalog # RHE84602, Green Histogram) at a concentration of 5 µg/ml for 30 mins at RT. After washing, bound antibody was detected using a FITC conjugated goat anti-human antibody (Catalog # PHB96441) and cells analysed on a NovoCyte Flow Cytometer.



Flow-cytometry using anti-human GPC3 antibody. HepG2 cells were stained with an irrelevant antibody (Blue Histogram) or an anti-human GPC3 antibody monoclonal antibody (Catalog # RHE84602, Green Histogram) at a concentration of 5 µg/ml for 30 mins at RT. After washing, bound antibody was detected using a FITC conjugated goat anti-human antibody (Catalog # PHB96441) and cells analysed on a NovoCyte Flow Cytometer.



Flow-cytometry



WESTERN BLOT

Flow-cytometry using anti-human GPC3 antibody. Human Jurkat cell line were stained with an irrelevant antibody (Blue Histogram) or an anti-human GPC3 antibody monoclonal antibody (Catalog # RHE84602, Green Histogram) at a concentration of 5 µg/ml for 30 mins at RT. After washing, bound antibody was detected using a FITC conjugated goat anti-human antibody (Catalog # PHB96441) and cells analysed on a NovoCyte Flow Cytometer.

Various lysates were subjected to SDS PAGE followed by western blot with GPC3 antibody (RHE84602) at 1 µg/ml.

Lane 1: Human GPC3 transfected HEK293 cell lysate

Lane 2: Non-transfected HEK293 cell lysate

Second Ab: Goat Anti-Human IgG H&L Polyclonal antibody, HRP (PHB96431) at 0.1 µg/mL.

Predict MW: 63 kDa

Observed MW: 63 kDa