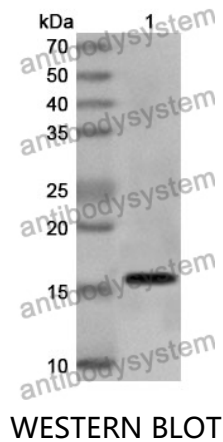


Anti-GDF5 Polyclonal Antibody

Summary

Catalog No.	PHE39001
Host species	Rabbit
Tested applications	ELISA: 1:4000-1:8000, IHC: 1:50-1:100, WB: 1:1000-1:4000
Species reactivity	Human, Mouse, Rat
Immunogen	E. coli - derived recombinant Human GDF5 (Ala382-Arg501).
Form	Liquid
Storage buffer	0.01M PBS, pH 7.4, 50% Glycerol, 0.05% Proclin 300.
Clonality	Polyclonal
Isotype	IgG
Applications	ELISA, IHC, WB
Target	Growth/differentiation factor 5,BMP14,BMP-14,Radotermin,GDF-5,Bone morphogenetic protein 14,GDF5,CDMP-1,Lipopolysaccharide-associated protein 4,LAP-4,CDMP1,Cartilage-derived morphogenetic protein 1,LPS-associated protein 4
Purification	Purified by antigen affinity column.
Accession	P43026
Stability and Storage	Use a manual defrost freezer and avoid repeated freeze thaw cycles. Store at 2 to 8°C for frequent use. Store at -20 to -80°C for twelve months from the date of receipt.
Note	For research use only.

Data Image



Recombinant Protein lysates were subjected to SDS PAGE followed by western blot with GDF5 antibody (PHE39001) at 1 µg/ml.

Lane 1: Recombinant protein

Second Ab: Goat Anti-Rabbit IgG H&L Polyclonal antibody, HRP (PTB96431) at 0.1 µg/mL.

Predict MW: 16 kDa

Observed MW: 16 kDa