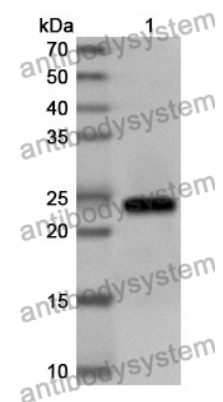


Anti-CD212/IL12RB1 Polyclonal Antibody

Summary

Catalog No.	PHE37101
Host species	Rabbit
Tested applications	ELISA: 1:4000-1:8000, IHC: 1:50-1:100, WB: 1:1000-1:4000
Species reactivity	Human
Immunogen	E. coli - derived recombinant Human CD212/IL12RB1 (Pro37-Glu234).
Form	Liquid
Storage buffer	0.01M PBS, pH 7.4, 50% Glycerol, 0.05% Proclin 300.
Clonality	Polyclonal
Isotype	IgG
Applications	ELISA, IHC, WB
Target	IL-12 receptor beta component,CD212,IL-12R-beta-1,IL-12RB1,IL12RB1,Interleukin-12 receptor subunit beta-1,IL-12 receptor subunit beta-1,IL12R,IL-12R subunit beta-1,IL12RB
Purification	Purified by antigen affinity column.
Accession	P42701
Stability and Storage	Use a manual defrost freezer and avoid repeated freeze thaw cycles. Store at 2 to 8°C for frequent use. Store at -20 to -80°C for twelve months from the date of receipt.
Note	For research use only.

Data Image



WESTERN BLOT

Recombinant Protein lysates were subjected to SDS PAGE followed by western blot with CD212/IL12RB1 antibody (PHE37101) at 1 $\mu\text{g/ml}$.

Lane 1: Recombinant protein

Second Ab: Goat Anti-Rabbit IgG H&L Polyclonal antibody, HRP (PTB96431) at 0.1 $\mu\text{g/mL}$.

Predict MW: 24 kDa

Observed MW: 24 kDa