

# Anti-Human HERV-K Env/ERVK-6 Antibody (2I5/H4)

## Summary

---

<b>Catalog No.</b>	RHK06501
<b>Alternative Names</b>	HERM-1811-5, HERM 1811-5, HERM1811-5
<b>Clone ID</b>	2I5/H4
<b>Host species</b>	Mouse
<b>Species reactivity</b>	Human
<b>Form</b>	Liquid
<b>Storage buffer</b>	0.01M PBS, pH 7.4.
<b>Concentration</b>	1.43 mg/ml
<b>Purity</b>	>95% as determined by SDS-PAGE.
<b>Clonality</b>	Monoclonal
<b>Isotype</b>	IgG2a, kappa
<b>Applications</b>	ELISA, WB
<b>Target</b>	Endogenous retrovirus group K member 6 Env polyprotein, EnvK2 protein, Envelope polyprotein, HERV-K(C7) envelope protein, HERV-K(HML-2.HOM) envelope protein, HERV-K108 envelope protein, HERV-K_7p22.1 provirus ancestral Env polyprotein, Surface protein, SU, Transmembrane protein, TM, ERVK-6, ERVK6
<b>Purification</b>	Protein A/G purified from cell culture supernatant.
<b>Endotoxin level</b>	Please contact with the lab for this information.
<b>Accession</b>	Q69384

## Stability and Storage

Use a manual defrost freezer and avoid repeated freeze-thaw cycles.

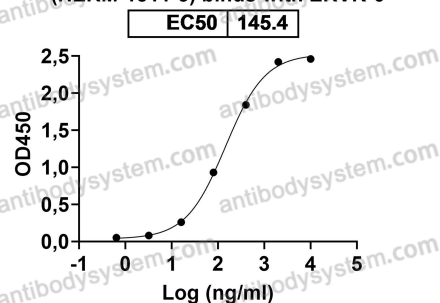
Store at 4°C short term (1-2 weeks). Store at -20°C 12 months. Store at -80°C long term.

## Note

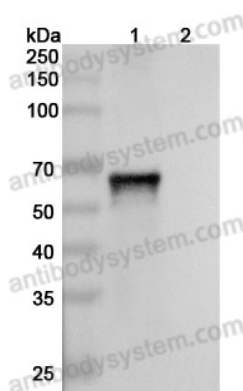
For research use only.

## Data Image

Anti-Human HERV-K Env/ERVK-6 Antibody  
(HERM-1811-5) binds with ERVK-6



## Bioactivity



## WESTERN BLOT

Detects Human ERVK-6/HERV-K Env in indirect ELISAs.

Various lysates were subjected to SDS PAGE followed by western blot with HERV-K Env/ERVK-6 antibody (RHK06501) at 1µg/ml.

Lane 1: Human HERV-K Env/ERVK-6 transfected HEK293 cell lysate

Lane 2: Non-transfected HEK293 cell lysate

Second Ab: Goat Anti-Mouse IgG H&L Polyclonal antibody, HRP (PMB96431) at 0.1 µg/mL.

Predict MW: 62 kDa

Observed MW: 62 kDa