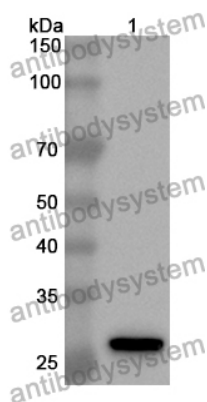


Anti-MYT1 Polyclonal Antibody

Summary

Catalog No.	PHF87701
Host species	Rabbit
Tested applications	ELISA: 1:4000-1:8000, IHC: 1:50-1:100, WB: 1:1000-1:4000
Species reactivity	Human, Mouse, Rat
Immunogen	E. coli - derived recombinant Human MYT1 (His903-Val1121).
Form	Liquid
Storage buffer	0.01M PBS, pH 7.4, 50% Glycerol, 0.05% Proclin 300.
Clonality	Polyclonal
Isotype	IgG
Applications	ELISA, IHC, WB
Target	MYT1, Myelin transcription factor 1, KIAA0835, MTF1, MyT1, KIAA1050, Proteolipid protein-binding protein, Myelin transcription factor I, MyTI, PLPB1, MYTI
Purification	Purified by antigen affinity column.
Accession	Q01538
Stability and Storage	Use a manual defrost freezer and avoid repeated freeze thaw cycles. Store at 2 to 8°C for frequent use. Store at -20 to -80°C for twelve months from the date of receipt.
Note	For research use only.

Data Image



Western Blot

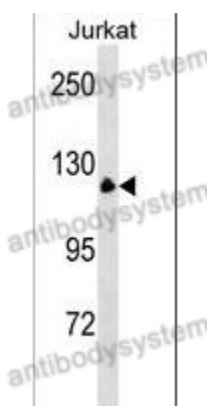
Recombinant Protein lysates were subjected to SDS PAGE followed by western blot with MYT1 antibody (PHF87701) at 1 µg/ml.

Lane 1: Recombinant protein

Second Ab: Goat Anti-Rabbit IgG H&L Polyclonal antibody, HRP (PTB96431) at 0.1 µg/mL.

Predict MW: 26 kDa

Observed MW: 26 kDa



Western Blot

Various lysates were subjected to SDS PAGE followed by western blot with MYT1 antibody (PHF87701) at 1 µg/ml.

Lane 1: Jurkat

Second Ab: Goat Anti-Rabbit IgG H&L Polyclonal antibody, HRP (PTB96431) at 0.1 µg/mL.

Predict MW: 122 kDa

Observed MW: 122 kDa



Immunohistochemical

Immunohistochemical analysis of human cerebellum stained for MYT1 with PHF87701.