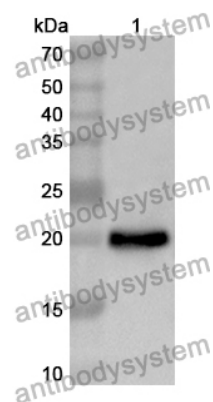


Anti-SHH Polyclonal Antibody

Summary

Catalog No.	PHH10701
Host species	Rabbit
Tested applications	ELISA: 1:4000-1:8000, IHC: 1:50-1:100, WB: 1:1000-1:4000
Species reactivity	Human, Mouse, Rat
Immunogen	E. coli - derived recombinant Human SHH (Pro36-Ala193).
Form	Liquid
Storage buffer	0.01M PBS, pH 7.4, 50% Glycerol, 0.05% Proclin 300.
Clonality	Polyclonal
Isotype	IgG
Applications	ELISA, IHC, WB
Target	ShhNC, Sonic hedgehog protein, Shh N-terminal processed signaling domains, SHH, Shh unprocessed N-terminal signaling and C-terminal autoprocessing domains, ShhN, ShhNp, HHG-1
Purification	Purified by antigen affinity column.
Accession	Q15465
Stability and Storage	Use a manual defrost freezer and avoid repeated freeze thaw cycles. Store at 2 to 8°C for frequent use. Store at -20 to -80°C for twelve months from the date of receipt.
Note	For research use only.

Data Image



Western Blot

Recombinant Protein lysates were subjected to SDS PAGE followed by western blot with SHH antibody (PHH10701) at 1 μ g/ml.

Lane 1: Recombinant protein

Second Ab: Goat Anti-Rabbit IgG H&L Polyclonal antibody, HRP (PTB96431) at 0.1 μ g/mL.

Predict MW: 20 kDa

Observed MW: 20 kDa