

Anti-Clostridium perfringens plc/Phospholipase C/Alpha-toxin Polyclonal Antibody

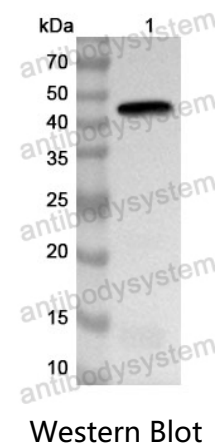
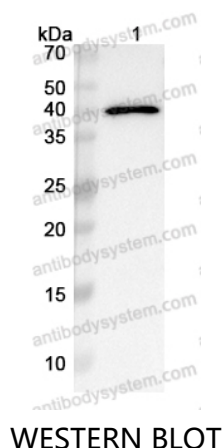
Summary

Catalog No.	PXX01001
Host species	Rabbit
Tested applications	ELISA: 1:2000-1:8000, IHC: 1:50-1:200, WB: 1:500-1:4000
Species reactivity	Clostridium perfringens
Immunogen	E. coli - derived recombinant Clostridium perfringens plc/Phospholipase C/Alpha-toxin (Ala28-Lys398).
Form	Liquid
Storage buffer	0.01M PBS, pH 7.4, 50% Glycerol, 0.05% Proclin 300.
Concentration	1.15 mg/ml
Clonality	Polyclonal
Isotype	IgG
Applications	ELISA, IHC, WB
Target	Phospholipase C, PLC, 3.1.4.3, Alpha-toxin, Hemolysin, Lecithinase, Phosphatidylcholine cholinephosphohydrolase, plc, cpa, CPE0036
Purification	Purified by antigen affinity column.
Accession	P0C216
Stability and Storage	Use a manual defrost freezer and avoid repeated freeze thaw cycles. Store at 2 to 8°C for frequent use. Store at -20 to -80°C for twelve months from the date of receipt.

Note

For research use only.

Data Image



Recombinant Protein were subjected to SDS PAGE followed by western blot with Clostridium perfringens plc/Phospholipase C/Alpha-toxin antibody (PXX01001) at 1:32000.

Lane 1: Recombinant Clostridium perfringens plc/Phospholipase C/Alpha-toxin([YXX01001](#))

Second Ab: Goat Anti-Rabbit IgG H&L Polyclonal antibody, HRP (PTB96431) at 0.1 µg/mL.

Predict MW: 40 kDa

Observed MW: 40 kDa

Recombinant Protein lysates were subjected to SDS PAGE followed by western blot with plc/Phospholipase C/Alpha-toxin antibody (PXX01001) at 1 µg/ml.

Lane 1: Recombinant Protein

Second Ab: Goat Anti-Rabbit IgG H&L Polyclonal antibody, HRP (PTB96431) at 0.1 µg/mL.

Predict MW: 46 kDa

Observed MW: 46 kDa