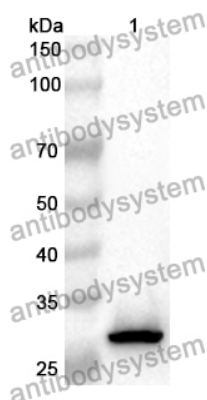


Anti-GLI3 Polyclonal Antibody

Summary

Catalog No.	PHC78001
Host species	Rabbit
Tested applications	ELISA: 1:4000-1:8000, IHC: 1:50-1:100, WB: 1:1000-1:4000
Species reactivity	Human, Mouse, Rat
Immunogen	E. coli - derived recombinant Human GLI3 (Met111-Ser343).
Form	Liquid
Storage buffer	0.01M PBS, pH 7.4, 50% Glycerol, 0.05% Proclin 300.
Clonality	Polyclonal
Isotype	IgG
Applications	ELISA, IHC, WB
Target	GLI3 form of 190 kDa, GLI3FL, GLI3-83, Transcriptional activator GLI3, GLI3, GLI3-190, GLI3 C-terminally truncated form, GLI3 full-length protein, GLI3 form of 83 kDa
Purification	Purified by antigen affinity column.
Accession	P10071
Stability and Storage	Use a manual defrost freezer and avoid repeated freeze thaw cycles. Store at 2 to 8°C for frequent use. Store at -20 to -80°C for twelve months from the date of receipt.
Note	For research use only.

Data Image



Western Blot

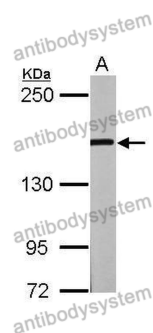
Recombinant Protein lysates were subjected to SDS PAGE followed by western blot with GLI3 antibody (PHC78001) at 1 µg/ml.

Lane 1: Recombinant protein

Second Ab: Goat Anti-Rabbit IgG H&L Polyclonal antibody, HRP (PTB96431) at 0.1 µg/mL.

Predict MW: 28 kDa

Observed MW: 28 kDa



Western Blot

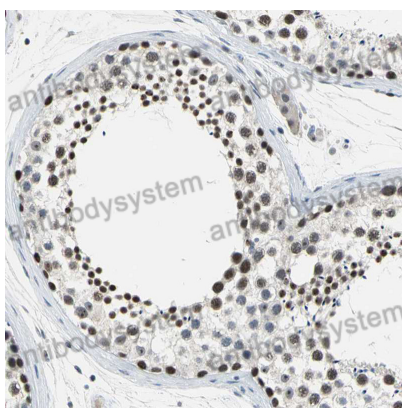
Various lysates were subjected to SDS PAGE followed by western blot with GLI3 antibody (PHC78001) at 1 µg/ml.

Lane 1: Mouse ESC

Second Ab: Goat Anti-Rabbit IgG H&L Polyclonal antibody, HRP (PTB96431) at 0.1 µg/mL.

Predict MW: 170 kDa

Observed MW: 170 kDa



Immunohistochemical

Immunohistochemical analysis of human testis stained for GLI3 with PHC78001.